



# FOODBANK

THE NEWSLETTER OF THE HAWAII FOODBANK  
JULY 2007 · NUMBER 64

## Review

### Food Banks Go Hungry as Manufacturers, Retailers Reduce Waste, Overstocks; Charitable Pantries Suffer

#### Annual Food Donations Three Years Ago

Three years ago, the Hawaii Foodbank received an average of 815,585 pounds of perishable and nonperishable food per month from grocery stores, wholesalers, food manufacturers, the United States Department of Agriculture (USDA), America's Second Harvest and the local community.

Today, the Foodbank receives an average of 733,580 pounds of food per month -- 82,005 pounds less per month than three years ago, and 984,060 pounds less overall for the year.

#### Food Banks Are Hurting Nationwide

The significant decrease in food donations at the Hawaii Foodbank are a part of a bigger picture nationwide. Fewer donations have been reported at the Food Bank for Monterey County which used to receive as much as 40,000 pounds of canned goods and other products every three weeks. They now receive similar donations every three to four months.

Similar numbers tell the story throughout the nation's food bank network. The Community Food Banks of South Dakota in Sioux Falls, S.D. received 35 percent fewer donations than last year. The Greater Chicago Food Depository experienced a 12 percent decrease in donations; St. Mary's in Phoenix, AZ, a 15 percent decrease.

Lower food donations mean less food distributed to pantries, feeding programs, shelters and soup kitchens. Lower food donations mean less food is getting out to the people who need it.

Hawaii Foodbank member agencies have seen the

gradual decline in the quantity and variety of foods available for their programs.

Becky Westfall from Save the Food Basket has been distributing food through her pantry program for 10 years now. The program started as a once-a-month

distribution of canned foods and dry goods. Then the distribution evolved into a nutrition program to meet the needs of the HIV/AIDS clients served. Save the Food Basket has received fewer monetary and food donations over the years, but Becky has always found ways to be resourceful and compensate for the loss. Foods received from the Foodbank are supplemented with purchased meat, produce, eggs and dairy products. "We signed up to receive USDA product, we've changed meal menus and reduced salaries. I'm the only paid staff person," Becky admits.

On the other hand, Trinity Church Central Oahu has been distributing food boxes for only five months each week to families from Waianae, Waipahu and Wahiawa. Today Pastor Peter Anderson sees less food available in the warehouse than anytime else since the ministry became a member agency of the Foodbank. "There have been times when there's no cereal or rice which is a staple for many of the families our ministry serves." When food is short in the church pantry, "We give out what we can," said Pastor Pete. "We don't purchase extra food since we can't



afford it." Instead, Pastor Pete tries to select his foods carefully based on nutritional value. However there have been many times when he receives emergency calls for food on Friday and doesn't have any to give. "We have storage, but it's really not needed because the food we get today is given out before the end of the week."

In general, agencies have noticed a shortage of cereals, cold cuts, canned meats and fruits, frozen foods and fresh produce. To cope with the loss, many agencies substitute with other foods, purchase extra food or as a last resort, reduce the quantity of food given to their clients.

#### Food Manufacturers Increase Production Efficiency

Lower food donations are partially due to the increase in efficiency of food manufacturers nationwide. Manufacturers are producing quantities of food that more closely match orders received from



retailers, thereby reducing excess product. Improved technology has also meant fewer errors during the manufacturing process. Missing labels on cans or the wrong text printed on boxes of crackers happen less frequently. The result: fewer donations for food banks.

#### Retailers Reduce Waste

Grocery stores are also being more efficient with their inventory to reduce waste and profit losses. Instead of sending damaged goods to food banks, food is sold at a discount to customers. Or products may be sold to discount stores.

Grocery stores are also implementing new technologies to track and monitor inventory. High volume products are identified and ordered so stores only stock products which sell.

#### The Hawaii Foodbank Needs Your Support

With almost a million pounds of food less donated this year, the Foodbank urgently needs

#### INSIDE

Food Banks Go Hungry	1
NALC Food Drive	2
HFB Calendar of Events	3
Ohana Club Donor Form	3
Great Chefs Fight Hunger	4
HFB 3rd Annual Golf Classic	5
Kraft's Check-Out Hunger	5
Mahalo to Our Donors	6-9
HFB in the Community	10
HFB Hunger Walk 2007	11
Iwa Peppers Memoriam	11
Nourishing Body and Soul	12



**OFFICERS**

- Chair** Linda Chu Takayama  
*Attorney at Law*
- 1st Vice Chair** Noel Trainor  
*Hilton Hawaiian Village Beach Resort & Spa*
- 2nd Vice Chair** Roger Godfrey  
*Community Volunteer*
- Secretary** Mark Felmet  
*First Hawaiian Bank*
- Treasurer** Ralph Nakatsuka  
*American Savings Bank*

**DIRECTORS**

- Cindy Bauer  
*Feeding the Hungry* Barry O'Connell  
*HFM FoodService*
- Rick Blangiardi  
*KGMB 9* Sheri Rolf  
*Rolf Advertising*
- Stanley Brown  
*ConAgra Foods* Daryl Sato  
*Advantage Webco Hawaii*
- Brian Christensen  
*C&S Wholesale Grocers* Mary Sellers  
*Bank of Hawaii*
- Chuck Cotton  
*Clear Channel Radio* Gerald Shintaku  
*Kraft Foods Hawaii*
- Sarah Fargo  
*Community Volunteer* James Starshak  
*Carlsmith Ball, LLP*
- Dennis Francis  
*Honolulu Star-Bulletin & MidWeek* Jack Stern  
*Community Volunteer*
- Hoagy Gamble  
*L.H. Gamble Co., Ltd.* George Szigeti  
*Better Brands*
- Michael Gold  
*HMSA* Ronald Taketa  
*Hawaii Carpenters Union, Local 745*
- Dick Grimm  
*Hawaii Foodbank, Inc.* Wayne Teruya  
*Teruya Brothers*
- D.K Kodama  
*Sansei Seafood Restaurant & Sushi Bar* Mark Tonini  
*Hawaii Foodservice Alliance, LLC*
- Michael Navares  
*United Airlines* Guy Wages  
*Foodland Super Markets, Ltd.*
- Gary North  
*Matson Navigation Company*

**NATIONAL ASSOCIATION OF LETTER CARRIERS FOOD DRIVE**



Saturday, May 12 was a busy day for Hawaii's letter carriers, Foodbank staff and volunteers. It was the 15th Annual National Letter Carriers Food Drive, the nation's largest one-day effort to "Stamp Out Hunger."

Letter carriers statewide collected donated food from mailboxes and transported them to postal stations. Matson Navigation provided four shipping containers to hold and transport the food. Trucks and drivers from Island Movers, Anheuser Busch, HFM FoodService, Hawaii Transfer, Sun Isle West, WDI and ILWU Local 142 were donated for use that day.

At 4:00 p.m., 130 volunteers from Aloha United Way, the AFL-CIO, ILWU, UFCW, the Glaziers, the Boy Scouts, Hawaiian Tel FCU, Hale Ola, DISA-PAC, HGEA and C.S. Wo started to arrive at the Foodbank warehouse in Mapunapuna. After checking in they assisted in unloading, weighing, sorting, boxing and palletizing the food.

Volunteers and staff worked straight through 7:00 p.m. when a hearty meal of beef stew and rice with macaroni salad and cheese cake was served to all by Jerry Foster and his volunteers from Harbor House.

After everyone had their fill, the warehouse was busy once more with activity. By evening's end, 238,697 pounds of food had been weighed, sorted and palletized.

A total of 310,188 pounds of food was collected statewide. This year there was an

increase in canned protein donations by 1,091 pounds, bringing total protein up to 53,350 pounds. Canned proteins are one of the most important donations the Foodbank receives throughout the year. Sources of protein are




in such demand by member agencies the Foodbank must ration them to last the year.

Congratulations to the Hawaii Association of

Letter Carriers for organizing another successful food drive. Thank you to President **Terry Kaolulo** and the team of **Bruce McDowell** (Waikiki Post Office), **John Simbahon** (Waianae Post Office), and **Adele Yoshikawa** (Pearl City Post Office) on a job well done!

"This is one of the Foodbank's biggest and most important food drives," said **Ken Ito**, Director of Warehouse Operations. "The quantity and quality of canned foods donated, especially canned protein, allows the Foodbank to continue distributing

nutritious food throughout the year. Without the Letter Carriers Food Drive, the Foodbank would need to purchase canned food and proteins to distribute to our agencies that feed the hungry." 



**EDITOR**  
Lori Kaya

**CONTRIBUTING WRITERS**

Polly Kauahi, Lori Kaya, Jodi Yoshida

The Foodbank Review is the newsletter of the Hawaii Foodbank. The publication serves to thank our donors and inform the public about Foodbank events and volunteer opportunities. If you do not wish to receive a copy, please contact Lara Grimm at 836-3600, ext. 223 to have your name removed from our mailing list.

Hawaii Foodbank  
2611 Kilihou Street, Honolulu, HI 96819  
Ph: 808.836.3600 • Fax: 808.836.2272  
[www.hawaiiifoodbank.org](http://www.hawaiiifoodbank.org)

## GUINNESS WORLD RECORD™ LARGEST GROUP HUG

**Saturday, September 29, 2007**  
 8:00 – 10:00 A.M., ALOHA STADIUM  
 MUST PRE-REGISTER TO ATTEND

Ten-year-old Ashley Kakazu is attempting to break the Guinness World Record for the “Largest Group Hug!” The Group Hug will be televised to spread the spirit of aloha to the world and raise awareness of hunger in Hawaii. The event will be limited to the first 10,000 registered. Canned goods will be collected from each person at entrance to benefit the Hawaii Foodbank.

**Michelle Kakazu: 671-4411, ext. 7**  
[www.planetfunUSA.com](http://www.planetfunUSA.com)



## DINE OUT, DEVOUR HUNGER

Presented by HONOLULU Magazine  
 Thursday, August 30, 2007

HONOLULU Magazine is celebrating the 30th anniversary of its All-Island Restaurant Guide on August 30th with “Dine Out, Devour Hunger.” Participating restaurants including Hukilau, Murphy’s Bar & Grill, Top of Waikiki and others, will donate a portion of proceeds raised that day to the Hawaii Foodbank.

[HONOLULUmagazine.com](http://HONOLULUmagazine.com)

## “CANSTRUCTION”

Saturday, October 6, 2007 - Build-Out  
 PEARLRIDGE CENTER, UPTOWN

The American Institute of Architects (AIA), Honolulu Chapter will once again form energetic and creative teams to build elaborate three-dimensional structures using canned foods. The “Canstruction” will happen on Saturday, October 6, 2007 with teams competing for first place in the following categories: Jurors’ Favorite, Structural Ingenuity, Best Use of Labels, Best Meal, and Most Cans. The finished “Canstructions” will be on display for two weeks at Pearlridge Center, Uptown. All canned foods used in building these fantastic structures will be donated to the Hawaii Foodbank. Mahalo to the AIA Honolulu, Foodland Super Market, Ltd., Pearlridge Center, HonBlue, and Oceanic Time Warner Cable for making “Canstruction” possible!

**AIA Honolulu: 545-4242**  
**Hawaii Foodbank: 836-3600, ext. 244**



## HAWAII-PACIFIC AREA 2007 COMBINED FEDERAL CAMPAIGN

September 1 - December 15, 2007

The Hawaii Foodbank encourages all federal employees to participate in the Combined Federal Campaign (CFC). Please designate your donations to the Hawaii Foodbank by referring to your official campaign pamphlet for our new organization number. Your contributions will help feed Hawaii’s children, the elderly, the homeless and low-income working families.



## GIVE ALOHA

September 1 – 30, 2007  
 ALL FOODLAND AND SACK ‘N SAVE STORES  
**Hawaii Foodbank Donation Code - 77425**



Visit your neighborhood Foodland or Sack ‘n Save store during the month of September

and “Give Aloha” to help feed the hungry in Hawaii. Just mention Hawaii Foodbank code 77425 at any checkout counter and make a donation up to \$249.00 to the Hawaii Foodbank. A portion of all donations raised will be matched by Foodland and the Western Union Foundation up to a total of \$300,000 for all participating nonprofit organizations combined.

[www.foodland.com](http://www.foodland.com)

## ALOHA UNITED WAY CAMPAIGN

September 4 – October 12, 2007

Help feed Hawaii's hungry by requesting a donor designation form at your campaign coordinator's office and make a contribution to the Hawaii Foodbank. Donor designation forms now online!



[www.auw.org/about/donorchoice.asp](http://www.auw.org/about/donorchoice.asp)

Please join our monthly Ohana Club donors to help feed the hungry in Hawaii. You may sign up at [www.hawaiifoodbank.org](http://www.hawaiifoodbank.org) or complete and mail the form at right. Your first gift will be processed from your checking or savings account with future gifts on or about the 15th of each month. Your bank statement(s) will show the date and amount of transfer. We will also send you a year end statement listing your contributions for tax purposes. Should you want to discontinue your monthly gifts, just notify us within 10 business days before your next transfer.

Name: \_\_\_\_\_  
 Address: \_\_\_\_\_  
 Phone: \_\_\_\_\_ E-mail: \_\_\_\_\_  
 Donation:  \$100  \$50  \$25  Other \_\_\_\_\_  Monthly  
 Bank: \_\_\_\_\_  Checking  Savings Routing # \_\_\_\_\_  
 Acct. #                  
 VISA  MasterCard  American Express Exp. Date      
 Acct. #                  
 Signature \_\_\_\_\_

# Great Chefs® Fight Hunger®

PRESENTED BY AIG HAWAII

Great Chefs® Fight Hunger was held on Saturday, March 24 at the 2,500 square foot Hawaii Foodbank warehouse in Mapunapuna.

Early entry guests began arriving at 5 o'clock. Valet parking was provided by Elite Services. Early entry guests enjoyed a private hour of delicious food and beverages before sunset. The smooth sounds of Jazzy Jay filled the warehouse, while the chefs prepared their signature dishes.

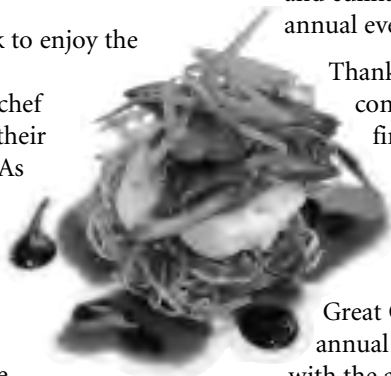
More diners arrived at 6 o'clock to enjoy the variety of dishes offered by 17 participating restaurants. Each chef prepared generous portions of their featured dishes for all to enjoy. As guests moved from station to station, they also chose from a wide selection of fine wines, ales, coffees or soft drinks to enhance their meals.

At the same time, Vaihi took the stage. The sounds of the Hawaiian group filled the warehouse with fun and energy. Guests mingled throughout the facility and were amazed at the size and capacity of the Hawaii Foodbank. Many found their favorite dishes and visited those stations as often as they wanted.

VIP table seating was enjoyed by title sponsor **AIG Hawaii**, along with **Carlsmith Ball**, the **Great Aloha Run Charities** and the **James**

**Campbell Company, LLC**. VIP guests enjoyed table service by the wonderful staff of **Sansei Restaurants**.

Through AIG Hawaii's generous sponsorship, VIP table sales, ticket sales and many in-kind donations, Great Chefs Fight Hunger raised over \$55,000 to feed the hungry. The Hawaii Foodbank gives special thanks to the restaurants and chefs for sharing their time and culinary talents to support this annual event.



Thanks also to the beverage companies who donated their fine products and time to serve our guests. The evening would not have been complete without them.

Great Chefs® Fight Hunger is an annual event planned and executed with the assistance of many. The Hawaii Foodbank thanks **D.K Kodama, Chuck Furuya, Clear Channel Radio, Accel Party Rentals & Design, Elite Services** and **Stryker Weiner & Yokota** for their expertise in making the event enjoyable and successful for the Hawaii Foodbank and its 500 guests.

We hope to see you at the next **Great Chefs Fight Hunger** on March 22, 2008! 🇺🇸

*Great Chefs® is a registered trademark of Great Chefs® Television/Publishing, GCI, Inc., New Orleans.*

## RESTAURANTS

12th Avenue Grill  
Alan Wong's Restaurant  
Chai's Island Bistro  
Chef Eric Leterc, The Pacific Club  
d.k Steak House  
Green Door Café  
Haagen-Dazs  
Halekulani Hotel & Dining  
Hiroshi's Eurasian Tapas  
Hokulani Bake Shop  
JW Marriott Ihilani Resort & Spa  
Olive Tree Café  
Onjin's Café  
Roy's Restaurant  
Sam Choy's Breakfast Lunch & Crab  
Sansei Seafood Restaurant  
& Sushi Bar

## BEVERAGES

Anheuser-Busch of Hawaii  
Better Brands  
Coca-Cola Bottling Company  
of Hawaii  
Fiji Water  
Grand Crew Wines & Merchants  
Illy Coffee  
JMD Beverages  
Ocean Vodka  
Paradise Beverages  
Southern Wine & Spirits of Hawaii



# HAWAII FOODBANK 3RD ANNUAL GOLF CLASSIC

Co-sponsored by the Hilton Hawaiian Village Beach Resort & Spa and the Hawaii Foodbank Hotel Coalition

There were 249 golfers playing in teams of three at the Hawaii Prince Golf Club on Friday, February 16. It was a day of friendly competition over the course of 27 challenging holes.

Golfers began to arrive at 9:30 a.m. to register and warm up. Many of them participated in a putting contest to win prizes including restaurant gift certificates and golf putters sponsored by Adecco, the Employment People. Golfers fueled up before tee off with steak sandwiches from Morton's The Steakhouse and packed



Host Kimo Kahoano and Tadd Fujikawa.

their bags with fresh fruits donated by Safeway Food and Drug Store and snack packs donated by Nabisco. Beverages were generously donated by the Coca-Cola Bottling Company, Aloha Maid Juices & Tea, Hawaiian Sun and Anheuser-Busch of Hawaii.

At the 11 a.m. shot gun start, 83 teams started their 18-hole course. Throughout the course, employees from the Hilton Hawaiian Village encouraged all golfers to purchase "Golden Tickets" for the chance to win a special prize package: a trip for two to

New York with airfare sponsored by Continental Airlines and hotel accommodations at the luxurious Waldorf Astoria Hotel sponsored by the Hilton.

At the end of the day, golfers gathered at the club house to join emcee Kimo Kahoano for dinner, prizes and good times. During one of the Lucky Draw prize announcements there was an unexpected surprise, Tadd Fujikawa, Hawaii's newest golf sensation, joined the golfers for dinner and prizes.

The Hawaii Foodbank 3rd Annual Golf Classic raised over \$48,000 thanks to the commitment and dedication of the Golf Classic Committee, Hawaii Foodbank Hotel Coalition and the Hilton Hawaiian Village Beach Resort & Spa. A special thank you goes to HMSA and Hawaii Care & Cleaning for their Eagle sponsorships.



General Manager Noel Trainor of the Hilton Hawaiian Village (right) presents winner Michael Browning (left) with the Golden Ticket prize: five nights at the luxurious Waldorf Astoria Hotel in New York City!

Remember to save the date for the 2008 Annual Golf Classic on Friday, February 15 at the Hawaii Prince Golf Club for another round of great golf to help feed the hungry!

## THE WORKS

A-1 A-lectricians Inc.	Dick Pacific	HMSA	Sakai, Iwanaga & Sutton
Adecco-The Employment People	Double Tree Alana Hotel Waikiki	Horizon Lines	Sause Bros.
Advantage Webco Hawaii	Dr. Alan Papst	Hyatt Regency Waikiki Resort & Spa	Southern Wine & Spirits of Hawaii
Aloha Shoyu	DTRIC Insurance	Kraft Foods Hawaii	Sprint Hawaii together with Nextel
ALSCO	Fairmont Specialty	L & S Sales, LLC	Team Clean
American Savings Bank	First Hawaiian Bank	Love's Bakery	The Lunch Bunch/Carval Catering
Armstrong Produce	Frito Lay of Hawaii	Matson Navigation Company	The Pacific Resource Partnership
Atlantis Adventures LLC	Fujitsu Network Communications Inc.	MC&A, Inc.	Times Supermarkets
Bank of Hawaii	Group 70 International	Merrill Lynch	TJ Kraft Ltd.
Bates/Lee Inc.	Harris Agency	Milici Valenti Ng Pack	Tropic Fish
Better Brands	Hawaii Candy	Mitsunaga Construction	UNICOLD Corporation
Better Media	Hawaii Care & Cleaning	NCL America	Waikiki Beach Activities
Castle Resorts & Hotels	Hawaiian Telcom	Nursery Associates	Waikiki Beach Marriott Resort & Spa
Certified Management	HFB Board	Oak Tree Securities Inc.	Worldwide Flight Services
Champion Clean Corporation	HFM FoodService	Pacific Direct Connect	XEROX
Coca-Cola Bottling Company of Hawaii	Hilton Grand Vacations Club	Pacific Express, Inc.	Young Brothers, Ltd.
Commercial Plumbing, Inc.	Hilton Hawaiian Village Beach Resort & Spa	Pacific Transportation Lines	
Continental Mechanical	Hilton Waikiki Prince Kuhio	Park Shore Waikiki	
		R.M. Towill Corporation	
		Rider Hunt Levett & Bailey	

## Kraft's CHECK-OUT HUNGER

Annual Holiday Campaign Raises Over \$161,000 to Feed Hawaii's Hungry

The annual Kraft's Check-Out Hunger holiday campaign was a huge success raising \$161,228 to feed Hawaii's hungry. During the months of November, December and January, loyal customers, dedicated store employees and strong management teams gave generously to the campaign.

We would like to thank the following supporters for their continued participation in Kraft's Check-Out Hunger to help raise much needed funds during the holiday season to ensure our children, seniors and families are fed:

- Kokua Market Natural Food Co-op
- Safeway Food & Drug Stores
- Tamura's Fine Wine & Liquors
- Tamura's Market, Hauula
- Tamura's Market, Wahiawa
- Tamura Superette, Waianae
- Times Supermarkets

Very special thanks go to business manager Gerald Shintaku and his staff at Kraft Foods Hawaii for their dedication to increasing the growth of Check-Out Hunger year after year.



**OHANA CLUB**

*Monthly and Quarterly Donors*

Mr. and Mrs. Elbert G. Arakawa  
Mr. and Mrs. Alden I. Avery  
Mr. Ira V. Bailey  
Mrs. Maureen M. Ballard  
Mr. Greg D. Boorsma  
Ms. Barbara J. Brodhead  
Ms. Blossom M.H. Chang  
Bu-Shing Chen  
Ms. Catherine E. Davis  
Ms. Doris Domingo  
Dr. Dian A. Dooley  
E.A. Buck Insurance, Inc.  
Marlette L. Fernandez  
Mrs. Cheryl L. Fontes  
Mr. and Mrs. Charles D. Fox III  
Mr. and Mrs. Clarence Galik  
Mr. Donald E. Gately  
Mrs. Shirley B. Gould  
Mr. Lee V. Grosshuesch  
Mrs. Eleanor C. Henderson  
Ms. Carol L. Hong and Mr. W. B. Moffett  
Mr. Michael M. Howard  
Ms. Marsha E. Ito  
Mr. Norman M. Johnson  
Steve & April Kachilla  
Ms. Jo Ann C. Kocher  
Ms. Carrie L. Leonard and Mr. David N. Kimball  
Ms. Beverly M.C. Leong  
Ms. Jacqueline J. Levandoski  
Mr. and Mrs. Robert J. Loveless  
Moanalua Gardens Missionary Church  
Mr. Dennis Nakayue  
Randall & Brenda Naki  
Ms. Barbara M. Ornellas  
Rurik E. Ostman  
Mr. Craig Patterson  
Ms. Simone A. Perez  
Ron & Iris Poeopoe  
Restaurant Yoshiya  
Dan & Kimberly Richmond  
Peter & Patty Robb  
Mr. Michael W. Sankovic  
Steiner Healthcare LLC  
Mashyay Ling Ma'ili Kianakaua Tate  
Mr. and Mrs. Anthony R. Tepedino  
Priscilla Teixeira  
Ms. Judy Lee Tobias  
Edmund & Gail Tuthill  
Mr. Jose Villanueva  
Ms. Harriet Woods  
Mr. Robert M. Yee  
Mr. Ronald M. Yokota  
Mr. Gerald Yoshikane

**HARVEST CLUB**

*\$1,000 or More*

A-1 A-Lectrician, Inc.  
Acuity LLP  
AIG Hawaii Insurance Company, Inc.  
All Nippon Airways Co., Ltd.  
Aloha Petroleum, Ltd.  
Aloha United Way  
Anheuser-Busch Sales of Hawaii, Inc.  
Atlantis Adventures, LLC  
Mr. A. Bernard Bays  
Ben & Jerry's  
Better Brands  
Budget Rent A Car  
Carlsmith Ball LLP  
Carole Kai Charities, Inc.  
Certified Management, Inc.  
Charley's Taxi  
Mr. and Mrs. Cedric Choi  
Dick Pacific Construction Co., Ltd.  
E.A. Buck Insurance, Inc.  
Edward Enterprises, Inc.  
Robert & Sharon Ehrhorn  
Electricians, Inc.  
Michael & Janice Fergus  
Ferraro Choi & Associates, Ltd  
First American Title Company INC  
First Hawaiian Bank  
Food Pantry, Ltd.  
Foodland Super Market, Ltd.  
Frito-Lay of Hawaii  
Gentry Homes, Ltd.  
GO Financial Corp  
Mrs. Shirley B. Gould  
Mr. Richard T. Grimm  
Hanalani Schools  
Harry and Jeanette Weinberg  
Foundation  
Harry Chow Wong & Nee Chang C.  
Wong Foundation  
Hawaii Care & Cleaning, Inc.  
Hawaii Carpenters Union  
Hawaii Community Foundation  
Hawaii Foundation for Diabetics  
Hawaii Hotel & Lodging Association  
Hawaii Justice Foundation  
Hawaii Pet Expo  
Hawaii Western Management Group  
HawaiiUSA Federal Credit Union  
Henry and Colene Wong Foundation  
HFM FoodService  
Hawaii Government Employees  
Association  
Hilton Hawaiian Village Beach  
Resort & Spa

HMSA  
Honolulu Star-Bulletin & MidWeek  
Horizon Lines  
Charles & Mildred Ikehara  
IIWU Local 142  
Mr. Rex H. Iimaye  
James & Sally Zukerkorn Foundation  
James Campbell Co.  
Joseph and Vera Zilber Family  
Foundations, Inc.  
JW Marriott Hotel Services, Inc./dba  
JW Ihlani Resort & Spa  
Mr. Charles Kamai  
Karen & David Stoutemyer  
Charitable Fund  
KGM89  
King Windward Nissan  
Kober/Hanssen/Mitchell Architects  
Kokua Market  
Andrew & Donna Lee  
Robert & Maxine Leong  
Leonora F. & Joseph K. Wee Family  
Fund  
Love's Bakery  
Macy's West  
Mary D. and Walter F. Frear  
Eleemosynary Trust  
Matson Navigation Company  
MC&A, Inc.  
McCriston Miller Mukai  
MacKinnon LLP  
Milici Valenti Ng Pack  
Moanalua Gardens Missionary  
Church  
James & Marilyn Pappas  
Peter Vincent & Associates LLC  
R.M. Towill Foundation  
Ms. Jeanne G. Rand  
Mr. and Mrs. Joel Ranua  
Reylon  
Rider Hunt Levett & Bailey Ltd  
Ron & Sanna Higgins Family  
Foundation  
Ms. Crystal K. Rose  
Safeway Food & Drug  
Sam's Club  
Ms. Mary E. Sellers  
Servco Foundation  
Ms. Margaret Sheehan  
Anne and Harry Siegmund  
Ms. Barbara Barnard Smith  
Sprint Hawaii  
State Farm Insurance Companies  
State of Hawaii  
Mr. Thomas Staton  
Stupski Family Fund  
Linda Chu Takayama  
Tamara Superette - Waianae  
Tamara's Wahiawa  
Tang Family Foundation  
TD Food Group, Inc.  
The Edwin S.N. Wong Foundation  
The Lunch Bunch/Carval Catering  
The Pacific Resource Partnership  
The Pampered Chef  
The Robert and Betty Wo Foundation  
The Schuler Family Foundation  
Times Super Market, Ltd.  
Unicoid Corporation  
United Airlines  
Mr. Arthur J. Usher IV  
Leslie and Annie Usui  
Victoria Ward Centers  
Waikiki Beach Marriott Resort & Spa  
Wal-Mart  
Charles and Devra Wathen  
WDI Companies, Inc.  
Mr. Michael B. Wood  
Worldwide Flight Services, Inc.  
Xerox Hawaii  
Young Brothers, Limited  
Zephyr Insurance Company, INC.

**CENTURY CLUB**

*\$100 or More*

412nd Veterans Club Service Chapter  
Ms. Juvy C. Abad  
Ms. Marie K. Abatayo  
Pauline T. Abe  
Jane & Shunji Adachi  
Ms. Kristi Adachi  
Mr. Marvin J. Adams  
Adecco Personnel Services  
AES Hawaii, Inc.  
Ms. Gloria Affigne  
Pacifico & Beverly Agulay  
Ms. Ranelle Akau  
Rose P. Aki  
Hank & Carol Akimoto  
Eric N. Akiyama  
Ala Moana Hotel  
Mr. and Mrs. Steven C. Alber  
Aliamuni Elementary School  
Mr. Andrew P. Allen  
J.R. Allen  
John Fierro / Aloha Roofing, Inc.  
Aloha Shoyu Co., Ltd.  
AlohaCare  
ALSCO  
Mr. and Mrs. Thomas Ambrosi  
American Association of Critical  
Care Nurses - HI Chapter  
American College of Surgeons  
Hawaii Chapter  
American Savings Bank  
America's Second Harvest

Dale Ammerman  
Ms. Barbara J. W. Andaya  
Mr. and Mrs. Leslie K. Anderson  
Ms. M. Anne Anderson  
Ms. Sachl Anderson  
Mr. John W.S. Andrade, Sr.  
Ms. Shela Anzai  
Toshuke & Muriel Arakaki  
Mr. Cosmo T. Arakawa  
Mr. Larry M. Araki  
Mr. and Mrs. Kenneth K. Arasato  
ARINC  
Mr. Brian P. Arkle  
Armstrong Produce, Ltd.  
Ms. Susan L. Arnett  
Ms. Linda Sue Arnold  
Mr. William M. Arnott  
Mr. D. Bart Aronoff  
Mrs. Denise M.S.K. Asato  
Mrs. Jamie S. Asato  
Ms. Lorena K. Au  
Ms. Dawn G. Aull  
Mr. and Mrs. Robert K. Faurost  
Robert & Haruka Badger  
Ms. Lisa A. Bail  
Mr. and Mrs. Wilhelm J. K. Bailey  
Mr. Raymond F. Baker  
Mrs. Heidi E. Baldonadi  
John & Kahu Baldwin  
Bank of Hawaii  
Ms. Kathy Barbosa  
Mr. Steve Barnes, Jr.  
Basic Food Group, LLC  
Mrs. Beverly Bass  
Mr. William M. Bass  
Mr. and Mrs. Towar B. Bates, Jr.  
Bates/Lee, Inc.  
Mr. Bill Baughman  
Ms. Teresa M. Bay  
Ms. Kay Beach  
Mr. J. Gordon Beaton  
Belt Collins Hawaii, Ltd.  
Mr. and Mrs. Ian B. Beltran  
Mr. Daniel Bender  
Mr. and Mrs. Edward R. Bendet  
Mr. Jerry H. Bentley  
Nan & Bud Bergquist  
Ms. Belle K. Bernatowicz  
David & Mary Ann Berry  
Better Media, Inc.  
Mr. Ronald S. Bezanson, Jr.  
Edoardo Biagioli  
Ms. Joleann K. Birch  
Dr. and Mrs. Gary L. Blaich  
Mr. Larry Bolibol  
Mr. and Mrs. Robert S. Bonnell  
Mr. David W. Booth  
Booz Allen Hamilton  
Dr. Michael Bornemann  
Ms. Katherine F. Braden  
Mr. and Mrs. Norman Brand  
Mr. Horst G. Brandes  
Brandvold & Associates, Inc.  
Mr. and Mrs. Everett A. Bransford  
Mr. Robert W. Brant  
Mrs. Maxine Mary Bray  
Mr. James M. Bredberg, Sr.  
David & Elizabeth Bremer  
Mr. Richard W. Brookling  
Ms. Rodlyn Brown  
Brown's Plumbing & Solar  
Mr. Dwayne M. Bueno  
Ms. Louise K. Burbank  
Cynthia R. Burdge, M.D.  
Mr. and Mrs. William A. Burgess  
Mark & Margaret Burgessporter  
Mr. and Mrs. H. Richard Burson  
Business Network International  
Mr. Edward Butac and Ms. Jodi  
Javonillo  
Buzz's Original Steak House  
Daniel M. Cabrera, Sr.  
Mr. Edwin C. Cadman  
Tom & Suzanne Cajscki  
William & Milafior Caliedo  
Mr. and Mrs. Simeon A. Callejo  
Ms. Jean Campbell  
Mr. and Mrs. Jesus J. Canyete  
Cardinal Services, Ltd.  
Ms. Barbara J. Cargill  
Mrs. Marion E. Carpenter  
Mr. and Mrs. Robert Carreira  
Mr. Julio Carrillo  
Ms. Patricia Carroll  
Mr. Marley W. Carter, Jr.  
Ms. Charlotte A. Carter-Yamauchi  
Ms. Rosemary Casey  
Alfred & Sharlene Castillo  
Ms. Mary L. Castillo  
Ms. Carrie I. Castle  
Castle Medical Center  
Mr. Daniel J. Castor  
Dr. Ann B. Catts  
Century Computers  
Mr. Vincent Chan  
Mr. Paul Chandler  
Ms. Blossom M.H. Chang  
Ms. Karen M. Chang  
Ms. Okchu Chang  
Ms. Victoria L.H. Chang  
Mr. John M. Chapman  
Mr. and Mrs. David A. Chappell  
Faye & Philip Chang  
Mr. Michael Cheang

Mr. Cheon Pyau Chee  
Bu-Shing Chen  
Mr. Simon K.Y. Cheng  
Mr. Matthew I. Chikasuye  
Mr. and Mrs. Chauncey T. K. Ching  
Philip & Gerry Ching  
Ms. Reney Ann Ching  
Ron & Betty Ching  
Ms. Wanda L.M. Ching  
Dr. and Mrs. Jonathan K. Cho  
Lydia & John Chock  
Ms. Nilda R. Chock  
Stephen C. Chock  
Kelvin Chong  
Ms. Lindsay L. M. Chong  
Mr. Stephen Chong  
Mrs. Jeanne M. Choo  
Ming-Yi Chou  
Ms. Lila Chun Chrystal  
Ms. Christine S. Y. Chun  
Ms. Colleen L. Chun  
Mr. Landon H. Chun  
Mr. and Mrs. Clyde Y. Chun  
Dr. and Mrs. Michael J. Chun  
Philip S. Chun  
Mr. Stewart Chun  
Mr. Stuart S.L. Chun  
Mrs. Twyla Chun  
Mr. A. Chung  
Ms. Cynthia K. H. Chung  
Ms. Frances Chung  
Mr. James P. Chung  
Ms. Vivian Chung  
Mr. Frank Cioffi and Ms. Kathleen  
Vickers  
City and County of Honolulu  
Ms. Janis Clapoff  
Mrs. Grace Ann Clark  
Nedra & Harold Clark  
Ms. Murvelene Clarke  
Classic Properties, Inc.  
Coca-Cola Bottling Company of  
Hawaii  
Mr. Carey Coffin  
Commercial Plumbing, Inc.  
Community Church of Honolulu  
Ms. Mary Jane Connell  
Ms. Nancy Connolly  
Jim & Irene Connors  
Ms. Shirley Connors  
Mr. and Mrs. Patrick J. Conroy  
Continental Mechanical of the Pacific  
Col. Tim C. Conway  
Ms. Dolores M. Cook  
Kleona B. Corsini  
Mr. and Mrs. Richard M. Cowan  
George & Bonnie Cramer  
Mr. and Mrs. Stephen E. Crist  
Mr. and Mrs. Paul F. Cronin  
Ms. Maeline L. Cua-Poon  
Mr. Richard Cundy  
Ms. Esther A. Cup Choy  
Curves  
Customers at Kelle's Coffee Roasting  
Company  
Larry & Kathy Cutshaw  
Ms. Katherine N. Daido  
Mr. and Mrs. Seo Foo Dang, Jr.  
DataHouse Consulting, Inc.  
Mr. and Mrs. Harry B. Davis IV  
Ms. Catherine E. Davis  
Ms. Sandra K. Davis  
Mr. Steven M. Dawson  
Mr. Phillip L. Deaver  
Mrs. Pamela Defreyne Griffin  
Ms. Asiana Dela Cruz  
Mr. Ronald G. DeReis and Ms.  
Loretta Ann Cambra  
Mr. Christopher E. Deringer  
Mr. and Mrs. Daniel H. Devaney IV  
Mr. and Mrs. Chris Dey  
Mrs. Audrey N. Dierdorff  
Ms. Geraldine Digmon  
Mr. Daniel Dinell  
Mr. Tracy T. Dixon and Ms. Marie J.  
Burdhardt  
Mr. Allen Doane  
Mr. T. P. Dobry  
Mr. Alfredo Domingo  
Dr. Dian A. Dooley  
DoubleTree Aloha Hotel - Waikiki  
Ms. Susan J. Dougherty  
Mr. and Mrs. C. Michael Douglass  
DTRIC Insurance  
Patrick & Grace Duarte  
Mr. Edward F. Duggan, Jr.  
Ms. Victoria L. Dumon  
Ms. Mary D. Duryea  
Paul L.A. Duvauchele  
Mr. Kendrick G. Dwyer  
Ms. Jacqueline L. Earle  
Ms. Diane K. Eddy  
Mr. James E. Edington  
Mike & Janet Elinski  
Bruce & Denise Ellinwood  
Mrs. Joan M. Ellis  
Samir A. El-Swaify  
Ms. Mary Emerson  
Mr. and Mrs. Raymond D. Emory  
Calvin and Kayoko Endo  
Mr. and Mrs. Henry Eng  
Mrs. Diane F. England  
Mr. Dan Erdman  
Mr. and Mrs. David Espinda III

Ms. Karen A. Essene  
Monica & Jerry Evans  
Mr. Lloyd Evers  
Fairmont Speciality  
Faith Assembly of God  
Mr. Richard J. Fall  
Mr. Donald J. Fallon, Jr.  
Mr. and Mrs. C. Richard Fasser  
Fee-McClaran, Ltd.  
Mr. and Mrs. Prudencio A. Ferido  
Ms. Rebecca M. Fernandes  
First Horizon National Corp  
First Unitarian Church of Honolulu  
G. Fischer  
Col. Ralph E. Fisher  
Five "O" Aloha Line Dancing  
Peter & Janice Floodsbart  
Ms. Mary K. Flanch  
Mr. Bob E. Flores  
Michael W. Fong  
Mrs. Cheryl L. Fontes  
Ms. Clara L. Foo  
Mr. and Mrs. Craig Foreman  
Ms. Kristine M. Foster  
Mr. Paul M. Fox  
Miss Kathleen M. Foy  
Ms. Valerie Franck  
Mr. and Mrs. Clayton A. Frank  
Mr. Arthur F. Freedle  
Miss Mary Jo Freshley  
Dr. and Mrs. Royal T. Fruehling  
Mr. and Mrs. Harry H.Y. Fu  
Mr. Stephen G. Fuerth  
Kenneth & Violet Fujii  
Mr. Eric Fujimoto  
Mr. Michael T. Fujioka  
Robert & Carolyn Fujioka  
Roger & Ruby Fujioka  
Mr. Albert Y. Fujisawa  
Fujitsu Network Communications,  
Inc.  
Ms. Mildred H. Fujiyama  
Mr. Lynn Fukuhara  
Ms. Dennis Fukushima  
Mr. G. N. Fukutomi  
Fulfillment Corporation of America-  
Hawaii  
Mr. Lloyd I. Funada  
Dr. and Mrs. Edward F. Furukawa  
Ms. Faith Furukawa  
Mrs. Sandra N.S. Furukawa  
Alvin & Karen Fuse  
Mr. and Mrs. Clarence Galik  
Mr. Thomas Graham Gans  
Mr. James D. Gardner  
Ms. Cindy Gasilos  
Mr. Donald E. Gately  
Mrs. Harriet A. Gay  
Stephen & Andrea Gelber  
Ms. Cicely Ann George  
Mr. Delmar Gilbert  
Gayle Y. Gilbert  
Ms. Jo Gilbert  
Dr. Alfred S. Gima  
GlaxoSmithKline Foundation  
Mrs. Rose Marie K. Glover  
Mr. and Mrs. Joseph H. Goldcamp III  
Ms. Judith Goldman  
Cindy Goldstein  
Ms. Ronda K. Goo  
Rosanne K. Goo and Rex Santos  
Goodwill Anderson Quinn & Stifel  
Mr. and Mrs. Alan J. Goto  
Victor & Karen Goto  
Gourmet Foods Hawaii  
Lawrence & Susan Goya  
Mrs. Arrien Grabbe  
Mrs. Donna Jean Grace  
Mr. Christopher J. Grandy  
Mrs. Estella M. Grantham  
Mr. and Mrs. B. W. Green  
Ms. Linda Q. Green  
Mr. Patrick E. Green  
Richard & Mary Green  
Mr. Carl M. Gregory  
Mrs. Boobpar Grehawick  
Mrs. Doreen L. Griffith  
Mr. and Mrs. Thomas A. Grimes  
Ms. Rhonda Griswold  
Group 70 International, Inc.  
Mrs. Dorothy L. Gulden  
Mr. Jack C. Gundrum  
Ms. Jo Lynn Guinness  
Mr. Lloyd Guthrie  
Mr. and Mrs. Robert S. Hahn  
Halm's Enterprises  
Lyle & Sandra Halverson  
Mr. Ernest O. Hamai  
Mr. and Mrs. Matthew E. Hammel  
Mr. and Mrs. Michael P. Hammett  
Mr. Charles E. Hanebuth  
Mr. and Mrs. Warren T. K. Hankey  
Charles & Lois Hanohano  
Scott & Sue Haraguchi  
Mr. and Mrs. Tetsuo Harano  
Ms. Frances R. Hardy  
Ms. Gayle Y. Harimoto  
Harland Clarke  
The Harris Agency, LLC  
Mr. Michael D. Hartenstein  
Mrs. Ruth Hartenstein  
Ms. Sheila M. Hartly  
Mr. and Mrs. Andrew G. Hashimoto

Mr. and Mrs. Kiyoshi Hashimoto  
Mr. Kenneth M. Hashizume  
Mr. Clark G. Hatch  
Hawaii Candy Inc.  
Hawaii Food Industry Association,  
Inc.  
Hawaii High School Athletic  
Association  
Hawaii Job Corps Center  
Hawaii State Teachers Association  
Hawaii Teamsters & Allied Workers  
Local 996  
Hawaii Transfer Co., Ltd.  
Hawaii Ultimate League Association  
Hawaian Airlines  
Hawaian Electric Industries  
Charitable Foundation  
Hawaian Lift Truck, Inc.  
Hawaian Telcom  
Hawaii's Electrical Export Company,  
Inc.  
Mr. Bryce T. Hayashi  
Jackie Hayashibara  
Ms. Marie B. Heck  
Mr. Eric N.S. Hee  
Ms. Florence Y. F. Hee  
Mr. David A. Heenan  
Ms. Darolyn Lendio Heim  
Ms. Linda M. Heloskie  
Dr. Charles E. Helsey  
HEMIC  
Mrs. Eleanor C. Henderson  
Mrs. Susan L. Henderson  
Mr. Steven Henry  
Mr. and Mrs. William H. Hepfer  
Mr. Thomas D. Herndon  
Mr. and Mrs. Julio C. Herrera  
Ms. Jennifer Herring  
Ms. Lili Hess  
Mr. and Mrs. Randall D. Heu  
Mr. David W. Heywood  
Mr. and Mrs. Robert P. Hiam  
Mr. Alton Hiroshi Higa  
Dr. and Mrs. James H. Higa  
Mr. and Mrs. Donald H. Higuchi  
Hilton Grand Vacations Club  
Hilton Waikiki Prince Kuhio  
Hiluhilu Development LLC  
Robert & June Hirano  
David & Jean Hirashiki  
Ms. Ruth S. Hirayama  
Ms. Candace M. Hirlman  
Mr. and Mrs. Edwin S. Hironaka  
Mr. and Mrs. Wayne T. Hisamoto  
Gerry K. Ho  
Ms. Pensri Ho  
Dr. and Mrs. Reginald C.S. Ho  
Mr. Donald Hodge  
Bill & Sharon Holaday  
Mr. and Mrs. Fred G. Holland  
Ms. Karin L. Holma  
Mrs. Charlene K. Homer  
Honolulu Club  
Honolulu Container Sales & Rental  
Company, Inc.  
Honomach, Inc.  
Mr. and Mrs. Ray Hooper  
Mr. and Mrs. Clifford I. S. Hosoi  
HSI Mechanical, Inc.  
HTH Corporation  
Mr. and Mrs. Thomas P. Huber  
Mr. and Mrs. Mark E. Hudson  
Miss Helen L. Huff  
Mr. Robert S. Hughes, Jr.  
Yue-Sun Hui  
Hula Grill Waikiki  
Ms. Nancy Elena Hulbirt  
Mr. Rodney M. Hurting  
Hyatt Regency Waikiki Resort & Spa  
Miss Anne E. Hyde  
Mr. and Mrs. Mark M. Ibara  
Ms. Ellen Ichishima  
Ms. Karen G. Ide and Mr. Thomas K.  
Foster  
Donald & June Ikeda  
Ms. Cindy Ikehara  
Claire Y. Ikehara  
Rodney & Cherie Imai  
Ms. Michelle C. Imata  
Ms. Laura Ing  
Innovators of Fashion  
Charles & Lorraine Inouye  
Mr. and Mrs. Myles C. Inouye  
Ms. Nancy K. Inouye  
Mr. Cary T. Isaki  
Mr. Gregg K. Isara  
G. S. Ishikawa  
Mr. and Mrs. Gary M. Ishikawa  
Mr. and Mrs. Roy M. Ishikawa  
Mr. and Mrs. Dennis Y. Ishimine  
Island Air  
Tully J. Isle  
Sara Isonaga  
Ms. Marsha E. Ito  
Ms. Sharon Itsuno  
Mr. Henry K. Iwasa  
Robert & Juanita Jacobsen  
Kevin & Claire Jaeger  
Ms. Judy Jakobovits  
Mr. and Mrs. Eric A. James  
James F. and Helen G. Gary Fund  
Ekhlass A. Jarjes  
Mrs. Marjorie S. L. Jay  
Jerry and Suzanne Murphy Family  
Fund

Mr. Laurie K. Jim  
JMD Beverages  
Mr. Ralph Johnson  
Mr. Rex D. Johnson  
Mr. and Mrs. Robert C. Johnson  
Ms. Susan M. Johnson  
Mr. William J. Johnson, Jr.  
Ms. Linda K. Johnsrud  
Mrs. Julia V. Jones  
Mr. and Mrs. Michael T. Jones  
Mr. Wesley Jones  
Mr. John Jubinsky  
Juice Plus Aloha  
Ms. Bonnie Kaanaana  
Ms. Jody S. Kadokawa  
George & Sarah Kadoyama  
Kris & Maria Kadzielawa  
Mr. Keith K. Kagamida  
Thomas Kagchiro  
Kahuna Dog Enterprises, LLC  
Kaiser Permanente  
Mr. Michael S. Shiroma  
Mr. George Kajiwara  
Mr. Michael Y. Kajiwara  
Ms. Marilyn E. Kali  
Mrs. Marlene K. Kamekawiwoole  
Mr. Edward S. Kamei  
Fred & Alice Kamemoto  
Mr. Gareth H. Kamemoto  
Mr. Thomas B. Kamikawa  
Gayle A. Kamisato  
Kanamekai, LLC  
Earl & Henrietta Kanayama  
Mr. and Mrs. Larry M. Kanda  
Ms. Naomi Kanehiro  
Mr. Wayne T. Kanemasa  
Edward and Marcia Kaneshige  
Mr. Art T. Kaneshiro  
Ms. Iris T. Kaneshiro  
Mrs. L. Kaneshiro  
Mori & Myrtle Kaneshiro  
Clarence & Janet Kanja  
Mr. and Mrs. Reuben K. Kanoho  
Kappa Epsilon Theta  
Jocelyn & Michael Kasamoto  
Mrs. June M. K. Kasashima  
Peter & Jill Kashiwa  
Ms. Charleen M. Aina  
Polly Kauihi  
Kaunakapili Church  
Ms. Janice A. Kawachi  
Atsuhiko Kawakana  
Ms. Laureen A. Kawasaki  
Mr. Maurice Kaya  
Mr. Michael D. Kaye  
Abraham and Linda Kealoha  
Charles & Beverly Kever  
Customers of Kelle's Coffee Roasting  
Company LLC  
Mr. and Mrs. Thomas R. Keller (RET)  
Ms. Carol Kellogg  
Tara & Kelly  
Mr. and Mrs. Alex V. Kendrick  
Ms. Elizabeth Kent  
Mr. Anthony H. Kepano  
Mr. Keoki Kerr  
Mrs. Margaret E. Kerr  
Mr. and Mrs. John C. Kheil  
Ricky & Natalie Kiehm  
Ms. Greta C. Kilpinen  
Mr. Chi Yon Kim  
Mr. Jason F. Kim  
Mr. Karl E. Kim  
Ms. Mary Julia K. Kim  
Dr. and Mrs. Robert Kim  
Brian & Leilani Kimota  
Mr. Clayton Kimoto  
Mr. and Mrs. Clyde I. Kimura  
Mr. Daniel T. Kimura  
Ms. Diane Mari Kimura  
John & Marilyn Kiner  
Mrs. R. Mildred King  
Ms. Maurine King  
Mr. William R. King  
Ms. Debbie Kini  
Mrs. Cynthia Kirby  
Ms. Elizabeth Kirk  
Mr. Brian M. Kishaba  
Ms. Emy F. Kishida  
Mrs. Janice S. Kiyabu  
Ms. Valerie S. Kiyokane  
Mr. W. M. Kleinbroich  
Mr. Greg Knudsen  
Mr. and Mrs. Wallace Y. Kobashigawa  
Mr. Paul M. Kobata  
Mr. Earl F. Kobatake  
Ms. Ann H. Kobayashi  
Ms. Barbara D. Kobayashi  
Ms. Carolyn K. Kobayashi  
Mr. and Mrs. Karl K. Kobayashi  
Ms. Lynne M. Kobayashi  
Clifford T. Kochi  
Ms. Laraine K. Koga  
Mr. Roger H. Koga  
Kokua In Kind  
Floria O. Komer  
Steven & Estrella Komura  
Ms. Eleanor Konishi  
Ms. Ann Sanae Koto  
Kraft Foods Hawaii  
Mrs. Dorraine K. Krahuik  
Ms. Joan D. Kramer  
George J. Krasnick  
Mr. Anton Krucky

Bryan & Audrey Kubo  
 Mr. and Mrs. Cory J. Kubota  
 Mr. Edgar B. Kudlich  
 Mr. and Mrs. E. Takeo Kudo  
 Mr. Franklin T. Kudo  
 Mr. and Mrs. Allan Kunewa  
 Ms. Jocelyn T. Kunimitsu  
 Mr. and Mrs. Robert I. Kuniyuki  
 Mr. Randall J. Kunselman  
 Mr. and Mrs. Clifton K. Kurasaki  
 Ms. June Kuroda  
 Mr. Kevin R. Kuroda  
 Kusao & Kurahashi, Inc.  
 Mrs. Wanda Kutaka  
 Betty & Walter Kuwaye  
 Mr. James Kyte  
 L.E.K. Consulting LLC  
 Mr. Derik La Benz  
 Mr. Sumner La Croix  
 Mr. and Mrs. John R. Lacy  
 Ms. Pamela Laderer  
 Mr. Donald F. Laidlaw  
 Ms. Marianne Lam  
 Patrick J. Lam, M.D.  
 Mr. Larry L. Langley  
 Mr. and Mrs. James H. Laroya, Jr.  
 Mr. David Lassner  
 Mr. Remy J. Latour  
 Mr. Benson K. Lau  
 Rodney and Anna Lau  
 Mr. Ronald D. C. Lau  
 Mrs. Carol K. Lau-McTee  
 Law Office of Sheila Sue-Noguchi, LLC  
 Mr. and Mrs. Greg Le Lesch  
 Leahi Swim School, Inc.  
 Mrs. Bessie S. Lee  
 Mr. and Mrs. Creighton A. Lee  
 Ms. Deanna Lee  
 Ms. Emily Jia-Leir Lee  
 Howard and Jean Lee  
 Mr. and Mrs. Jeffrey Lee  
 Ms. Katie Lee  
 Mrs. Karen C. Lee  
 Ms. Maile J. Lee  
 Mrs. Marlene H. Lee  
 Mr. and Mrs. Larry J. Lee  
 Robert & Jean Lee  
 Representative Marilyn B. Lee and  
 Mr. Samuel S.H. Lee  
 Leilani Chapter #8 O.E.S.  
 Ms. Agnes M. Leinaw  
 Ms. Katherine G. Leonard  
 Adeline W. Leong  
 Dr. Oren Leong and Dr. Jo-Ann C.  
 Leong  
 Mr. and Mrs. Richard Leong  
 Mr. Steven Leong  
 Ms. Denise Loui Leung  
 Ping Sun & Joo Leung  
 Ms. Foo May Lew  
 Ms. Erika Lewis  
 Mr. Jon P. Lewis  
 Ms. Karen Lewis  
 Mr. Peter C. Lewis  
 Mrs. Courtney Lin  
 Mr. John J. Link  
 Lions Club - Luualaei  
 Ms. Rita Jane Littlejohn  
 Mr. and Mrs. David Y.F. Liu  
 Ms. Dorothy L. H. Liu  
 Dr. Juanita C. Liu  
 Ms. Nelly Pongco Liu  
 Mrs. Wendy Loh  
 Mr. and Mrs. Russell M. Y. Loo  
 Paul & Barbara Love  
 Mr. and Mrs. Robert J. Loveless  
 Ms. Brenda Y. Low  
 Mr. and Mrs. G. Kem Lowry, Jr.  
 Mr. and Mrs. Victor M. Lubbecke  
 Mr. and Mrs. Tim Lui-Kwan  
 Ms. Sharon J.H. Luek  
 Mr. Francis K. Lum  
 Mr. and Mrs. Thomas W.O. Lum  
 Ms. Phoenix K. Lundstrom  
 Mr. Harvey J. Lung  
 Fred & Alice Lunt  
 Lynn K. Fujimoto, D.M.D.  
 Ms. Rachel Lynn  
 Merv & Bea Lyons  
 Ms. Mary E. Mackay  
 Mrs. Mary W. Macmillan  
 Macy's West United Way Campaign  
 Ms. Amy T. Maeda  
 Palm Maeda  
 Mrs. Sandra A. Maeda  
 Mr. Kevin K. Maekawa  
 Mr. and Mrs. Tze Mo Mak  
 Mrs. Sumi Y. Makey  
 Mr. Norton K. Malina, Jr.  
 Mr. and Mrs. John T. Maloney, Jr.  
 Ms. Alison K. Manaut  
 Mr. John P. Manaut  
 Mr. Robert T. Mann  
 Manolak Inc  
 Mr. John Manumaleuna  
 Mrs. Anne L. Mapes  
 Ms. Pamela Martin and Mr. Rick Mogle  
 Teruo & May Maruyama  
 Mr. and Mrs. David K. Masaki  
 Mr. and Mrs. George Mason  
 Dennis H. Matsuda  
 Mr. and Mrs. Bruce Y. Matsui  
 Mr. and Mrs. Daniel Matsukawa

Mr. Wayne M. Matsukawa  
 Ms. Faith A. Matsuwaka  
 Richard & Marjorie Mau  
 Ms. Janet M. Maxwell-Woo  
 Mr. Craig S. Mayeda  
 David & Wendie McClain  
 Frances McClurkin  
 Ms. Lynn P. McCrory  
 McCully Associates  
 Ms. Vernelle McElfresh  
 Mr. Michael McElroy  
 Ms. Harriet A. McFarlane  
 Mrs. Toyoko U. McGovern  
 Mrs. Jean McIntosh  
 Ms. Rebecca McKenzie-Young  
 Joshua & Myra McShane  
 Ms. Robin Allen Meade  
 Mr. and Mrs. John R. Medeiros III  
 Mediterranean Gourmet Food, Inc.  
 Ms. Angela C. Meixell  
 Mr. and Mrs. Gerald M. Meredith  
 Mr. Edwin Mersino  
 Mr. and Mrs. Patrick D. Meyer  
 Milliani Uka Elementary School  
 Ms. Carol E. Minn  
 Ms. Jessie Mitchell and Mr.  
 Randolph H. Francis  
 Mr. Samuel Mitchell  
 Mitsunaga Construction, Inc.  
 Galen & Jill Miura  
 Mr. Richard H. Miyagawa  
 Harold & Amy Miyamoto  
 Mr. and Mrs. Michael F. Miyamura  
 Ms. Sharlene Mizobe  
 David & Cheryl Moats  
 Momilani Elementary School  
 Mrs. Alicia A. Montero  
 Mr. Timothy S. Moore  
 Mr. Jean M. Morel  
 Ms. Marcia A. Morgado  
 Ms. Deborah K. Morikawa  
 Jacqueline Y. Morishige  
 Mr. James S. Morita  
 Ms. Lillian Y. Morita  
 Mr. Scott G. Morita  
 Mr. and Mrs. Michael J.S. Moriyama  
 Mr. and Mrs. John E. Morlan  
 Gene & Shirley Parola  
 Ms. Candace A. Motonaga  
 Ms. Joanne I. Mow  
 Mr. Ojisan, Inc  
 MRF Enterprises, LLC  
 John and Chris Mullen  
 Mrs. Martha L. Mullen  
 Ms. Lynn N. Muneno  
 Mr. and Mrs. Raymond Munger  
 Mr. Warren W. Munro  
 Mr. and Mrs. Archie T. Murakami  
 Gary & Naomi Murakami  
 Mr. Joel Murakami  
 Mr. Mark K. Murakami  
 Mr. Roy K. Murakami  
 Mr. Philip H. Muramoto  
 Mrs. Ruby H. Murata  
 Mr. and Mrs. Herbert Murata  
 Mr. and Mrs. James P. Murphy  
 Mr. and Mrs. William C. Murphy  
 Mr. James S. Myers  
 Mr. and Mrs. Jim Myers  
 Jean and Clarence Nagao  
 Ms. Sandra S. Nagasawa  
 Ms. Ellen T. Nagae  
 Mr. Michael K. Naito  
 Roy & Shirley Naito  
 Ms. Therese F. Nakadomari  
 Mr. Charles P. Nakagawa  
 Mr. Edward T. Nakagawa  
 Ms. Vicki Y. Nakahara  
 Mr. and Mrs. Raymond T. Nakai  
 Mr. and Mrs. Mark M.H.W.  
 Nakakura  
 Mr. Jan M. Nakama  
 Mr. Gary Y. Nakamatsu  
 Ms. Sharyn O. Nakamoto  
 Mr. Aaron Y. Nakamura  
 Mr. Sean Nakamura  
 Mr. and Mrs. Carl Nakao  
 Bruce & Vanina Nakaoka  
 Mr. Ralph Y. Nakatsuka  
 Mr. Dennis Nakauye  
 Mr. and Mrs. Takashi Nakayama  
 Randall & Brenda Naki  
 Nanakuli High & Intermediate School  
 Mr. Mike Navares  
 NGL America, Inc.  
 James & Norma Nekota  
 Dr. James S. Nelson, M.D.  
 Mr. and Mrs. Jon D. Nelson  
 Ms. Margaretta Nelson  
 NetEnterprise  
 Ms. Florence K. Nikaido  
 Ruth U. Ninomiya  
 Mr. and Mrs. Wayne T. Nishijima  
 George & Mabel Nishimoto  
 Mr. and Mrs. James K. Nishimoto  
 Mr. Dennis Nishimura  
 Mr. and Mrs. Stuart M. Nishimura  
 Kazuo & Florence Nishiyama  
 Mr. and Mrs. Edwin K. Nitta  
 Mr. Mike Nitta  
 Mrs. Tamah-Lani S. K. Noh  
 Ms. Norma Nojima  
 Mr. John L. Noland  
 Nordstrom

Northwest Airlines  
 Nova Alliance LLC  
 Nursery Associates, Ltd.  
 Mr. Dean J. Nushida  
 Oahu Painting & Decorating, Inc.  
 Oahu Waste Services, Inc.  
 Oak Tree Securities, Inc.  
 Gordon & Linda Oamilda  
 Obun Hawaii Group  
 Mr. Gary Oda  
 Mr. Harry Oda  
 Mr. Miles M. Oda  
 Roy & Gail Oda  
 Douglas & Carole Odo  
 Ms. Sharon Ogata  
 Mr. Wayne H. Ogata  
 Mr. James M. Ogimi  
 Mr. and Mrs. Carl H. Ohashi  
 Mr. Wayne K. Ohashi  
 Mr. and Mrs. Lawrence S. Okinaga  
 Ms. Jean C. Okubo  
 Dr. Wynn H. Okuda  
 Ms. Jill S. M. Omori  
 Ms. Evelyn U. Orita  
 Ms. Barbara M. Ornellas  
 Herb & Kathleen Oshiro  
 Tom & Yvonne Osredkar  
 Rurik E. Ostan  
 Ms. Jean Y. Ota  
 Mark K. Oto  
 Mr. Valerie B. Pacheco  
 Pacific Express, Inc.  
 Pacific Transfer LLC  
 Pacific Transportation Lines, Inc.  
 Eugene Paiva  
 Ms. Cheryl M. Palesh  
 Dr. Carolyn S. Pang  
 Ms. Loretta O.O. Pang  
 Mr. and Mrs. Marcus K. N. Pang  
 Mr. Michael W.H. Pang  
 Mr. Presley W. Pang  
 Ms. Susan K. S. Pang  
 Dr. Alan R. Papp  
 Paradise Carpet & Tile, Inc.  
 Ms. Catherine A. Parker  
 Ms. Kim Parker  
 Parker United Methodist Church  
 Gene & Shirley Parola  
 Mr. Robert L. Pascua  
 Samir & Nita Patel  
 Ms. Catherine H. Payne  
 Mr. Bradley K. Peahi, Jr.  
 Pearl Harbor Apprentice Association  
 Pearl Harbor Kai Elementary School  
 Penzoil Distributors of Hawaii, Inc.  
 Mr. Jonathan V. Perreira  
 Ms. Susan E. Pestana  
 Dr. and Mrs. Robert G. Peters  
 J.B. Pettengill  
 Nancy & Charles Pettiford  
 Mrs. Carole Picciotto  
 Ms. Patricia O. Piper  
 Mr. F. Wayne Pirtle  
 Mr. Theodore H. Plaister  
 Ms. Carolyn K. W. Plett  
 PM Realty Group  
 Mr. and Mrs. William C. Murphy  
 Leslie J. Poland  
 Ms. Patricia Polansky  
 Mr. Scott Poomaiehalani  
 William L. Popwell  
 Mrs. Randiann Porras-Tang  
 Mr. J. William Potter, Jr.  
 Mr. Craig R. Powers  
 Duane & Sarah Preble  
 Mr. William J. Puetter, Ph.D.  
 Ms. Jean Quigley  
 Mr. Ronald P. Quizon  
 R&C Hawaii Tours, Inc.  
 R.M. Towill Corporation  
 Rachel's Tax Service  
 Mr. James C. Radtke  
 Ms. Elizabeth S. Raman  
 Mr. Paul N. Rasmussen  
 Mr. and Mrs. David J. Reber  
 Mr. Mark E. Recktenwald and Ms.  
 Gailynn M. Williamson  
 Red Swan, Inc./Karbiz Dealer Center  
 Redhead Productions, LLC  
 Ms. Diane L. Reece  
 Dr. Benjamin T. Regala  
 Mrs. Karen M. Rehbock  
 James & Kathleen Reinhardt  
 Residential Choices, Inc.  
 Restaurant Row  
 Mr. Arthur B. Richardson  
 Dan & Kimberly Richmond  
 Dr. Robert Richmond  
 Mr. Bill Richter  
 Mr. Michael Riordan and Ms.  
 Connie S. Patton  
 Ms. Roberta A. N. Rita  
 Mr. and Mrs. Michael P. Rits  
 Mr. and Mrs. Rodney K.W. Rivera  
 Robb Young's Fine Woodworking  
 Mr. Frederick K. Robello  
 Mr. Kelley C. Roberson  
 Robert M. Kaya Builders, Inc.  
 Leo and Irene Roberts  
 Mr. John A. Robinette  
 Ms. Alison Robitaille  
 Mrs. Gladys E. Rodenhurst  
 Mr. Michael Roeder  
 Mr. Tom E. Roesser

Rolf Advertising  
 Mrs. Jean E. Rolles  
 Rons Construction Corporation  
 Mr. Jack E. Roose  
 ROSES Systems Solutions  
 Louis & Josette Rosof  
 Royal Contracting Co., Ltd.  
 Royal Entertainment, Inc.  
 Royal Hawaiian Movers  
 Mr. Raymond E. Runyan  
 Dr. Gareth Russell  
 Mel & Irene Sahyun  
 Mr. James Y. Saito  
 Mr. and Mrs. Scott S. Saito  
 Sakai Iwanaga Sutton Law Group  
 Mr. Brian L. Sakamaki  
 Mr. David R. Sakamoto  
 Mr. Kevin Sakamoto  
 Mr. and Mrs. Randolph W. Sakauye  
 Mr. Melvin Sakurai  
 Salt Lake Shopping Center  
 Mr. and Mrs. William I. Samaritano  
 Ms. C. Lani Samer  
 Mr. and Mrs. Philip B. Samulski  
 Gladys Sanchez  
 Ms. Cornelia L. Sandborn  
 Mr. Ian Lorne Sandison  
 Mr. Dennis Sanford  
 Mr. Michael W. Sankovic  
 Mr. Raymond Sato  
 Mr. and Mrs. Ryan T. Satsuda  
 Sause Bros., Inc.  
 Mr. Mark Schindler  
 Mr. William R. Schmidt  
 Schofield Women's Golf Club  
 School Kine Cookies  
 Ralph Schultz  
 Scott & Marianne Schultz  
 Mr. Robert J. Schwingen  
 Mr. and Mrs. Shawn Scribner  
 Mr. and Mrs. Justin Seguirant  
 Mr. and Mrs. Gerhard E. Seibert  
 Mr. and Mrs. James H. Seki  
 Mr. Anthony R. Sellitto, Jr.  
 Service Printers Hawaii  
 Mr. and Mrs. Guy J. Seu  
 Mr. Floyd A. Shadle  
 Ms. Beppie J. Shapiro  
 Shidler Hawaii Investment Partners,  
 LLC  
 Mrs. Ruby S. Shigeta  
 Mr. Clyde Shiigi  
 Mr. David A. Shima  
 Howard & Ethel Shima  
 Mr. Dane Shimabuku  
 Mr. Brian T. Shimabukuro  
 Representative Maile S.L.  
 Shimabukuro  
 Naomi Janet Shimabukuro  
 Mr. and Mrs. Marcus H. Shimomoi  
 Dayne & Shari Shinsato  
 Mr. and Mrs. Gerald Y. Shintaku  
 Mr. and Mrs. Derrick K. Shiraki  
 Mr. Earle F. Shiroma  
 Mr. Alvin M. Shishido  
 Ms. Ethel T. Shishido  
 Mr. Robert B. Shoemaker  
 Mr. Julian M. Showkeir  
 Ms. Myra Shozuya  
 Shredded Foam of Hawaii, Inc.  
 Mr. Frank C. Shuller  
 Mr. and Mrs. Edward J. Shultz  
 Mr. Dean M. Sierra  
 Mr. Miles Silberstein  
 Ms. Ruby K. Silva  
 Sisters of St. Francis Chapel Fund  
 Sisters of the Sacred Hearts Infirmary  
 Mr. Randolph R. Slaton  
 Mr. Bart B. Smith  
 Mr. Wilbur A. Smith  
 Li Col and Mrs. Lloyd K. Sodehani  
 Shinji and Masuko Soneda  
 Mrs. Chona A. Montesines-Sonido  
 Mrs. Nancy Souza, Jr.  
 Mr. Andres Soyo  
 Spam Jam Foundation  
 Mr. Dale Spaulding  
 Mr. Hardy Spoehr  
 St. Peter's Episcopal Church  
 Arthur & Carolyn Staats  
 Ms. Agnes L. Stahl  
 Mr. James L. Starshak  
 Steiner Healthcare LLC  
 Mr. Michael Steiner  
 O. K. Stender  
 Jack & Marsha Stern  
 Mr. Charles Stevenson  
 Ms. Julie D. Stevenson  
 Mrs. Louise S. Stevenson  
 Mr. Randall K. Stevenson  
 Mr. Robert E. Strand  
 R. & B. Suenaga  
 Kawena Suganuma  
 Mr. and Mrs. Raymond T. Sugimoto  
 Mr. Shigeo Sugiyama  
 Ms. Deborah J. Suliven  
 Mr. Larry M. Sumida  
 Mr. Kenneth N. Sumimoto  
 Ms. Eleanor Y. Tom Sun  
 Ms. Lily Sui-Fong Sun  
 Supremacy Car Club  
 Ms. Barbara K. Sur  
 Ms. Rona M. Suzuki  
 Mr. and Mrs. James D. Swoish

Mr. George D. Zsigeti  
 T.J. Kraft, Ltd.  
 Mr. Lance Tabe  
 Mrs. Janet C. Tachino  
 Ms. Sandra C. Tadaki  
 Ms. Donna M. Takahashi  
 Mrs. Elizabeth Takahashi  
 Mrs. May S. Takamine  
 Mrs. Natsue O. Takano  
 Frederick and Virginia Takara  
 Mr. Miles Takara  
 Major and Mrs. Paul M. Takata  
 Mr. Gerald H. Takei  
 Ms. Marilyn R. Takeshita  
 Ms. Sachiko Taketa  
 Ms. Jo M.U. Takeuchi  
 Mr. Eric Y. Takiguchi  
 Mr. Larry T. Takumi  
 David & Katherine Tallman  
 Mrs. Wai H. Fong  
 Ms. Patricia Tam  
 Ms. Valerie L. Tam  
 Mr. Jerrod H. Tamashiro  
 Ms. Rachel Tamashiro  
 Mr. Lloyd T. Tamura  
 Mrs. Annie M. Tanaka  
 Mr. and Mrs. Peter F. Tanaka  
 Mr. Tamotsu Tanaka  
 Mr. Calvin K. Tang  
 Mr. and Mrs. Itaru Tanimoto  
 Mr. Brian L. Tanoue  
 Henry & Doreen Tanoue  
 Mr. Russell Y. Tanouye  
 Ms. Denise M. Tasaka  
 Mrs. Lorraine S. Tasaka  
 Mashyaw Ling Ma'ili Kianakaua Tate  
 Mr. and Mrs. Ronald T. Tateishi  
 Mr. and Mrs. Michael C. Taylor  
 Team Clean, Inc.  
 Lt. Col. and Rev. Gary W. Teed  
 Theresa M. Teixeira  
 Mr. and Mrs. Anthony R. Tepedino  
 Cheves Terai  
 Mr. Kenneth K. Teramoto  
 Mr. Alan H. Teramura  
 Mr. Jesse H. Terpstra, Jr.  
 Ms. Mary Ann Teshima  
 Ms. Susan H. Thies  
 Ms. Dixie Thompson  
 Mr. Eric K. Thompson  
 Mr. Pete K.G. Thompson  
 Time Warner Telecom  
 Ms. Judy Lee Tobias  
 Mrs. B.J. L. Todd  
 Mr. and Mrs. Howard S. Tood  
 Mr. and Mrs. Glenn F. Tokuda  
 Mrs. Stephanie Y. Tokuhama  
 Mr. Robert Tokujio  
 Ms. Michelle T. Tolentino  
 Mr. Joseph H. C. Tom  
 Ms. Patsy H. Tom  
 Mr. Roy Tom  
 James & Doris Tomita  
 Mr. and Mrs. Vien That Ton  
 Mr. Mark S. Tonini  
 Ms. Lois M. Torikawa  
 Jean Toyama  
 Ms. Karen Toyama  
 Mr. Toshiro Toyama  
 Ms. Naomi Toyooka  
 Tsuyoshi & Hisako Toyooka  
 Mr. Noel G. Trainor  
 Transportation Security  
 Administration  
 Mr. Midori M. Trent  
 Tropic Fish & Vegetable Center  
 Mr. Paul M. Tschida and Ms.  
 Delrene Schmidt  
 Mr. and Mrs. Dick M. Tsuda  
 Mr. Dennis M. Tsuchiko  
 Torao & Wanda Tsujimoto  
 Ms. Ruth Tsujimoto  
 Mr. Timothy Tsukiyama  
 Ms. Nancy B. Evans Tudor  
 Mr. and Mrs. Gerald R. Tume  
 Terry & Diana Tusher  
 Edmund & Gail Tuthill  
 U.S. Customs & Border Protection  
 U.S. Department of Agriculture  
 Mr. Tyler T. Uehara  
 Mr. Donald M. Usato  
 Mr. Joseph C. Ului, Jr.  
 Mr. and Mrs. Kenneth M. Umamoto  
 Dr. Lloyd I. Uneasami  
 Mr. Michael S. Unglesbee  
 Unified Enterprises Corp.  
 University of Hawaii  
 University of Hawaii Foundation  
 Unlimited Services Group - Hawaii  
 LLC  
 Norman & Jane Uyechi  
 Mr. and Mrs. John T. Uyemura  
 Hikoharu Uyesato  
 Ms. Adrienne Valdez  
 Valenti Print Group  
 Mr. and Mrs. Gilbert Valentine  
 Mr. Robert B. Valliant  
 Mrs. Pat Van Winkle  
 Mr. Kumu B. Vasconcellos  
 Ms. Teresa Vast and Mr. Michael J.  
 Kieran  
 Luis A. Vega, Ph.D.  
 Dale P. Vehemente  
 Verizon Foundation

Ms. Charlene P. Villagomez  
 Mr. Angelo B. Villavicencio  
 VIP Trangs, Inc.  
 Vocational Management  
 Consultants, Inc.  
 Carl-Wilhelm & Candice Vogel  
 Lethia L. Von  
 Mr. and Mrs. Bruce D. Voss  
 Mr. Craig Parker Wagnild  
 Wahiawa Intermediate School  
 Waianae Community Food Drive  
 Waikiki Beach Activities, Inc.  
 Waikiki Parc Hotel  
 Waipahu High School  
 Ronald & Betty Wakatsuki  
 Mrs. Donna S. Walker  
 Mrs. Elizabeth T. Walls  
 Mr. Steve L. Wallschlaeger  
 Walter P. Thompson, Inc.  
 Mr. Farouk Wang  
 Mr. Mark D. Wang  
 Washington Middle School  
 Gary & Patricia Watanabe  
 Mrs. Corinne Watanabe  
 Water Resources International, Inc.  
 Michael L. Watkins  
 Ms. Cathryn Watson  
 Bill Watts  
 Ms. Betsy Weiner  
 Mr. and Mrs. Darrell G. Welch, Jr.  
 WellPoint Foundation  
 Ms. Marcia N. Westervelt  
 Mr. Jerome D. Whelan  
 Mr. and Mrs. Andrew C. Whelen  
 Ms. Anne T. White  
 Carol B. Whitesell  
 Ms. Wendy Wichman  
 Ms. Mary Aley Wilkinson  
 Mr. and Mrs. James D. Williams  
 Mr. James R. Williams  
 Ms. Linda Williams  
 Mr. David Wilson  
 Wimberly Allison Tong & Goo, Inc.  
 Ms. Louise P. Wolcott  
 Mr. and Mrs. Allen R. Wolff  
 Mr. and Mrs. David W. K. Wong  
 Mr. Eric Wong  
 Mrs. Estelle C. Wong  
 Mr. and Mrs. Francis M.P. Wong  
 Mr. Gerald E. Wong  
 Ms. Janelle Wong  
 Mr. Michael C. K. Wong  
 Michael & Annette Wong  
 Mr. and Mrs. Stanley E.H. Wong  
 Mr. Allen E. Wood  
 Mr. and Mrs. D. William Wood  
 Ms. Harriet Woods  
 Mrs. Lauren R. Wright  
 Mr. Willie C.K. Wu  
 XPEDX  
 Mr. Keith Y. Yamada and Ms. Lori  
 M. Ohinata  
 Mr. and Mrs. Roy M. Yamada  
 Mr. and Mrs. Stuart H. Yamada  
 Tokio & Janet Yamaguchi  
 Mrs. Susan R. Yamamoto  
 Mr. and Mrs. Greg T. Yamamoto  
 Ronald & Judy Yamamoto  
 Mr. Jon T. Yamamura  
 Ethel H. Yamane  
 Ms. Wanda H. Yamane  
 Ms. Beatrice T. Yamasaki  
 Mr. Bryan Y. Yamashiro  
 Ms. Lynn N. Arakawa and Mr. David  
 M. Yamashiro  
 Mr. Edwin T. Yamashiro  
 Mrs. Donna Y. Yamashita  
 Mr. and Mrs. Henry T. Yamashita  
 Mr. Richard K. Yamashita  
 Mr. Steven Yap  
 Mr. and Mrs. Terumitsu Yasuda  
 Mr. Glen Takashi Yase  
 Ms. Shirley Yasuhara  
 Mrs. Sandra N. Yasui  
 Mr. Donald Yasutake  
 Ms. Barbara Yee  
 Mr. Bryan J.Y. Yee  
 Clarence K.H. Yee  
 Mr. and Mrs. Herbert W. Yee  
 Mr. Robert M. Yee  
 YeeCorp, Inc.  
 Mr. Elijah Yip  
 Lance A. Yokochi  
 Darryl & Paula Yonezawa  
 Mrs. Leona A. Yoshida  
 Ms. Edythe M. Yoshihara  
 Paul and Joyce Yoshimoto  
 Robin C. T. Yoshimura  
 Mr. and Mrs. Thurston T. Yoshina  
 Bill Yoshinaga  
 Mrs. Lanette K. Yoshioka  
 Mr. Alan K. W. Young  
 Clarence & Virginia Young  
 Ms. Daisy Gee Young  
 Mr. Daniel C. Young  
 Ms. Dayna Lynn Young  
 Mr. and Mrs. Edwin Y.M. Young  
 Kelvin & Betsy Young  
 Mr. Leighton J. H. S. Yuen  
 Ms. Priscilla Zampaga  
 Mr. Charles A. Zapf  
 Ms. Debra S. Zeleznik  
 Marek J. Ziencina  
 Kenneth J. Zienciewicz, M.D.

Stan & Janet Zisk  
**ANNIVERSARY CLUB**  
**\$50 or More**  
 Ms. Barbara J. Abe  
 Ms. Carol Abe  
 Ms. Elaine T. Abe  
 Roy & Amy Abe  
 Brian & Patricia Aburano  
 Mr. and Mrs. Athan K. Adachi  
 Mr. Raymond R. Adames  
 Mr. and Mrs. Albert Ah Yuen  
 William & Kathleen Ahuna  
 Air New Zealand  
 Mr. and Mrs. Clayton Ajifu  
 Ms. Amy T. Akana  
 Mr. and Mrs. Arleigh M.O. Akana  
 Mr. Christopher K. Akana  
 Mr. Wayne A. Akemoto  
 Ms. Debora A. U. Akiu  
 Ms. Mary M. Akiu  
 Mr. and Mrs. Arthur T. Akiyama  
 Mr. and Mrs. Allan S. Akizaki  
 Ms. Sheila K. Alderman  
 Ms. Evelyn S. Alicante  
 Ms. Carla S. Allison  
 Mr. Henry Almodova  
 Mrs. Pearl Alonzo-Oshita  
 Mrs. Leila Tam Alu  
 American Express Company -  
 Employee Giving Campaign  
 American Home Mortgage Corp  
 Mrs. Carolyn Ancheta  
 M. W. Anderson  
 Ms. Susan C. Anderson RN  
 Ms. Charlyn N. Aoki  
 Mr. Dean K. Aoki  
 Ms. Elsie W. Aoki  
 Mr. and Mrs. Ricki S. Aoki  
 Raymond & Roberta Aono  
 Mr. Ibrahim Aoude  
 Ms. Denise N. Aoyagi  
 Ms. Cynthia Apana  
 Ms. Moana Apio  
 Ms. Linda Appel  
 Diane M. L. W. Apt  
 Mr. and Mrs. Minoru Arakaki  
 Mrs. Virginia C. Araki  
 Ms. Sarah Shirley Arneson  
 Mr. and Mrs. Geminiano W. Arre, Jr.  
 Mr. and Mrs. Mark M. Asato  
 Philip & Debra Asuncion  
 Ms. Shirley Stephen Atkin  
 Ms. Donna Au. and Mr. Robert L.  
 Hearn  
 Mr. and Mrs. Stanford K.W. Au  
 Mr. John E. Avent  
 J. & R. Awa  
 Mr. George E.K. Awai, Jr.  
 Gene Awakuni  
 Ms. Janet M. Bailey-Yoshino  
 Mr. Remedios Balanon  
 Ms. Carmen F. Balasbas  
 Mr. Ronald J. Baldwin  
 Mr. Delbert Ballou  
 Mr. Brian P. Bauer  
 Bill & Janet Beauieu  
 Mr. and Mrs. Walter Beh II  
 Mr. and Mrs. David T. Bell  
 Andre & Zulai Bellamy  
 Edward & Marie Benz  
 Lionel & Mitzie Berson  
 Ms. Nancy T. Blackman  
 Mr. and Mrs. Stephen F. Blecksmith  
 Ms. Evelyn B. Bolosan  
 Mr. Sandra S. Bolton  
 Ms. Marilyn T. Boock  
 Mr. Wayne Borth  
 Mrs. Leilani P. Bowen  
 Mr. Gen Boyer  
 Ms. Jane Lee Boynton  
 Jon & Jacqueline Branch  
 Mr. Jeffrey R. Branyon  
 Mr. and Mrs. Donald A. Bremner  
 Ms. Laurie Lau Brooks  
 Mr. and Mrs. Blake Brown  
 Dr. James D. Brown  
 Mrs. Susan S. Brown  
 Ms. Amalia B. Bueno  
 Ms. Judith Buffington  
 John & Rumi Bumbera  
 Mrs. Vyra Burgess  
 Mr. and Mrs. James M. Burgoyne  
 Ms. George-Anne A. Burke  
 Ms. and Mr. Jerilyn C. Burke  
 Mrs. Doris M. Burnette  
 Mr. and Mrs. Leon H. Burton  
 Mr. John E. Butler  
 Mr. Marcel P. Cabel  
 Guy S. Cabral  
 Ms. Linda Dorothy Lee Caecal  
 Cades Schutte LLP  
 Bob & Laurie Cahn  
 Ms. Laurie Caldwell  
 Harold W. Campbell  
 Mrs. Laurel Campbell  
 Mrs. Cecelia C. Camplone  
 Ms. Barbara J. Cannan  
 R. Caplett  
 Mr. Mel Cariaga  
 Ms. Ramona C. Bernardino  
 Dr. Paul J. Carry and Mrs. Linda Carry  
 Mr. F. Scott Carter  
 Mr. and Mrs. John A. Carter  
 Mr. and Mrs. James H. Case

- Sean & Darcy Castro  
Ms. Donna Cavallero  
Ms. Donna Lee Cazinha  
Brendan A. Chadwick  
Ms. Kristyne Champlin-Kaai  
Mrs. Annette S. U. Chang  
Mrs. Betty C. Chang  
Mr. Calvin K. S. Chang  
Ms. Cheryl Chang  
Mrs. Hope M. Chang  
Lindsay Chang  
Mrs. Lisa Teri K. Chang  
Ms. Mildred K. P. Chang  
Alfred & Jane Char  
Robert & Myrtle Char  
Mrs. Claire E. Taise-Chee  
Percival H. Chee, M.D.  
Jung Chen  
Mr. and Mrs. Richard H.W. Cheng  
Ms. Jane Cheong  
Mr. Ted Chernin  
Mr. Thomas K. Chesebro  
Ms. Becky T. Chestnut  
Mr. Rex K.K. Chueng  
Ms. JoAnne Chinen  
Ms. Shirley H. Chinen  
Ms. Calleen J. Ching  
Mrs. Cecily A. Ching  
Msgr Robert L. Ching  
Mr. Robin R. Ching  
Ms. Judy Choo  
Mr. Michael P. Choo  
Mr. and Mrs. Michael A. Chopoy  
Ms. Linda L.W. Chou  
Carol & J. Michael Chown  
Corey Y. S. Chun  
Mr. and Mrs. Edward K.M. Chun  
Mr. and Mrs. Albert M. Chun  
Ms. Mildred L. Chun  
Ms. Pamela E.L. Chun  
Ms. Pamela Lynn Chun  
Mrs. Grace C. Cheng  
Mr. Richard K.S. Chung  
Ms. Ramona L.Y. Chun-Shishido  
Nguyen Chuong  
City and County - Royal  
Hawaiian Band  
Ms. Cathryn H. Clayton  
Mrs. Sharon M. Coad  
Ms. Wanda C. Cochran and  
Ms. Candice L. Sanders  
Mr. and Mrs. Craig Collado  
Ms. Loretta J. Conchee  
Mr. Greg A. Concilia  
Mr. Perry W. Confolone  
Mr. Edward K. Conklin  
Ms. Honey K. Cooney  
Mr. and Mrs. William F. Cooper  
Mrs. Elizabeth R. Corbin  
Glenn & Inge Cordeiro  
Mr. Vincent G. Cordeiro  
J.B. & Hannah Corstorphine  
Ms. Deborah A.P. Courtney  
Mrs. Emi Crandall  
Ms. Esther C. Crandall  
Ms. Myrmanette C. Crider  
Mrs. Miki M. Crisp  
Mr. Peter Crouch  
Evelyn Y. Cummings  
Charles & Pearl Cummins  
Ms. Lori Cummins  
Mr. and Mrs. Alvin K. H. Dang  
Mrs. Bevrang Dang  
Mr. Dennis R. Danielson  
Ms. Cora M. Dargan  
Donlei Darnell  
Ms. Monisha Das Gupta  
Mr. and Mrs. Orlando R.  
Davidson  
Dr. Dineh Davis  
Peter & Jan Dawson  
Mr. John Defrancis  
Mr. and Mrs. Emmanuel C. Del  
Rosario  
Mr. and Mrs. Juanito A. Dela  
Cruz  
Delta Kappa Gamma Society  
International Kappa Chapter  
Mr. Mark L. Demello  
Ms. Diane E. Deportillo  
Mr. Lawrence J. Derbes  
Ms. Deborah L. Deshais  
Mr. and Mrs. Robert B.  
Desucido  
Mr. Timothy W. Dick  
Mr. Davy Uy Divine  
Mr. Dennis T. Doi  
Mr. and Mrs. Kenneth K. Doi  
Mr. and Mrs. Thomas W.  
Dombeck  
Ms. Edna Domingo  
Mr. and Mrs. Robert L.  
Donaldson  
Ms. Irene M. Donnelly  
Mr. and Mrs. James J. Donovan III  
Toan Do Doran  
Dallas & Sherry Dornan  
DS II Audit Services, Inc.  
Mr. Walter D. Dudinow, Jr.  
Ms. Madeline Duffey  
Ms. Arlene Duncan  
Ms. Marilyn Dunlap  
Ms. Patricia N. Dunn  
Mrs. Carmen Dusza  
Mrs. Joyce S. Dutcher
- Ms. Victoria G. Dworkin  
Ms. Esther E. Dye  
Mr. and Mrs. Peter D. Dye  
East West Realty, Inc.  
Mrs. Pauline Egan  
Ms. Sharon K. Ehi  
Mr. and Mrs. Harry T. Ebara  
Mr. Reid P. Elam  
Mr. Jeffrey Eldredge  
Ms. Kathleen Ellison  
Employment Specialists, LLC  
Mrs. Mary K. Enriquez  
Ms. Vanessa K. Escajeda  
Ms. Joyce L. Espinoza  
Ms. Zenaída R. Estrada  
Mr. Umon Y. Ewart  
Mr. Alfred Fajota  
Mrs. Lydia Faleto  
Mr. Colby J. Falk  
Ms. Joyce T. Favorite  
Mr. and Mrs. Winston C. Ferido  
Ms. Doris M. Fernandez  
Mr. Everett V. Fernandez  
Ms. Hiroko Fiemam  
Mr. and Mrs. Aisake N. Finau  
First Insurance Co. of Hawaii, Ltd.  
Mrs. Joanne Flannery  
Mr. Eric A. Fleckles  
Mr. Michael S. Flores  
Mr. and Mrs. Malcolm A. J. S.  
Fong  
Art & Carolyn Frank  
Mr. and Mrs. Ralph Freese  
Ms. Alexandra French and Mr.  
Jonathan C. Goldberg-Hiller  
Mr. and Mrs. H. Joe Fuchino  
Mr. Scott S. Fujieda  
Ms. Bonnie-Lynn H. Fujii  
Ms. Diane K. Fujii  
Ms. Kendra Fujikawa  
Franklin & Doris Fujimoto  
Mr. and Mrs. Gordon M.  
Fujimoto  
Ms. Sanae Fujimoto  
Peter & Gayleen Fujimura  
Mr. and Mrs. Alton J. Fujio  
Mr. and Mrs. Norman M.  
Fujio  
Francis & Gracie Fujitani  
Mrs. Diane S. Fukumoto  
Mr. Steven S. Fukunaga  
Ms. Katherine Fukushima  
Mr. John F. Fuller  
Mr. and Mrs. Gerald R. Ifuku  
Mr. and Mrs. Clyde I. Igarashi  
Mr. Morris Ige  
Mr. Samuel Ige  
Mr. and Mrs. Roderick M.  
Ignacio  
Mr. Richard Y. Iha  
Ms. Micoe Iinuma  
Mrs. Eve I. Ikeda  
Mr. and Mrs. Toshimaru Ikoma  
Mr. Michael A. Imai  
Mr. Mitsuo Imai  
Ms. Jean R. Imamoto  
Mrs. Karen S. Imamoto  
Jan N. Inao, M.D.  
Mr. Arnold H. Ing  
Ms. Louise K. Ing and Mr.  
Michael Sith  
Ms. Lynn Inoshita  
Senator Lorraine R. Inouye  
Mr. Steve A. Goo  
Mr. and Mrs. Chennat  
Gopalakrishnan  
Mrs. Barbara J. Gossard  
Ms. Linda K. Goto  
Ms. Beatrice Gould  
Mr. and Mrs. Clarence L.  
Gouveia  
Mr. and Mrs. John M. Goya  
Mr. Craig W. Graham, Jr.  
Malachy Grange  
Rev. John Granville  
Ms. Rochelle L. Gregson  
Mr. and Mrs. D.B. Griffin III  
Joel & Michel Grostein  
Mr. Duane J. Gubler  
Mrs. Carolyn K. Gugelyk  
Sandra and William Gurowitz  
Ms. Donna Gusman  
Mr. and Mrs. George Gusman, Jr.  
Ms. Iris Ha  
Mr. James Dutae Ha  
Mr. and Mrs. Frederick W.  
Hackbarth  
Randy & Carol Hamamoto  
Mr. Dennis T. Doi  
Mr. and Mrs. Kenneth K. Doi  
Mr. and Mrs. Thomas W.  
Dombeck  
Ms. Edna Domingo  
Mr. and Mrs. Robert L.  
Donaldson  
Ms. Irene M. Donnelly  
Mr. and Mrs. James J. Donovan III  
Toan Do Doran  
Dallas & Sherry Dornan  
DS II Audit Services, Inc.  
Mr. Walter D. Dudinow, Jr.  
Ms. Madeline Duffey  
Ms. Arlene Duncan  
Ms. Marilyn Dunlap  
Ms. Patricia N. Dunn  
Mrs. Carmen Dusza  
Mrs. Joyce S. Dutcher
- Mr. and Mrs. Robert Hayno  
Ms. Jan T. Hedani  
Jytte Hendrick  
Mr. Manfred Henningsen  
Mr. James Russell Henrie  
Mr. Thomas E. Herman, Jr.  
Ms. Eileen C. Herring  
Mr. Paul V. Heyd  
Mr. David M. Higa  
Mr. and Mrs. George Higa  
Mrs. Joyce Y. Higashi  
Mrs. Mary K. Kashiwaeda  
Ms. Edith S. Katada  
Mr. Guy H. Katayama  
Ms. Janice S. Kato  
Mr. and Mrs. Henry M. Katsuda  
Mr. and Mrs. Melvyn S.  
Kawahara  
Lt. Col. and Mrs. Peter J. S. Hirai  
Ms. Nancy R. Hiraoaka  
Sherrrie & Walter Hitchcock  
Mr. Milton T. Hiura  
Mr. Eric T. Hiyoito  
Mr. Garrison R. Ho  
Mr. and Mrs. Timothy E. Ho  
Dr. Sarah Hodell  
Dr. Lynn M. Hodgson  
Ms. Radha Watumull Homay  
Ms. Lei M. Honda-Sigall  
Mr. James K. Honke  
Charles & Nancy Honma  
Makoto Honnaka  
Mr. and Mrs. Jacob R. Hoopall  
Mr. and Mrs. Ed Hope  
Mr. and Mrs. Wayne T.  
Horikawa  
Irmgard Hormann  
D A Horsfall  
Mr. and Mrs. James O. Horton  
Mr. and Mrs. Timothy A.  
Houghton  
Mr. Robert E. Houk  
Ms. Martha Hoverson  
Mr. and Mrs. Ching Yuan Hu  
Ms. Valerie A. Hubin  
Ms. Mary Ann Huddle  
Mr. Robert N. Huey  
Mr. Kevin B. Hulbert  
Ms. Tina Hum  
Mr. and Mrs. Calvert W.T.  
Hung  
Mr. Richard Hunt  
Ms. Diane Ibaraki  
Alan & Chris Ichinose  
Mr. and Mrs. Gerald R. Ifuku  
Mr. and Mrs. Clyde I. Igarashi  
Mr. Morris Ige  
Mr. Samuel Ige  
Mr. and Mrs. Roderick M.  
Ignacio  
Mr. Richard Y. Iha  
Ms. Micoe Iinuma  
Mrs. Eve I. Ikeda  
Mr. and Mrs. Toshimaru Ikoma  
Mr. Michael A. Imai  
Mr. Mitsuo Imai  
Ms. Jean R. Imamoto  
Mrs. Karen S. Imamoto  
Jan N. Inao, M.D.  
Mr. Arnold H. Ing  
Ms. Louise K. Ing and Mr.  
Michael Sith  
Ms. Lynn Inoshita  
Senator Lorraine R. Inouye  
Mr. Steve A. Goo  
Mr. and Mrs. Chennat  
Gopalakrishnan  
Mrs. Barbara J. Gossard  
Ms. Linda K. Goto  
Ms. Beatrice Gould  
Mr. and Mrs. Clarence L.  
Gouveia  
Mr. and Mrs. John M. Goya  
Mr. Craig W. Graham, Jr.  
Malachy Grange  
Rev. John Granville  
Ms. Rochelle L. Gregson  
Mr. and Mrs. D.B. Griffin III  
Joel & Michel Grostein  
Mr. Duane J. Gubler  
Mrs. Carolyn K. Gugelyk  
Sandra and William Gurowitz  
Ms. Donna Gusman  
Mr. and Mrs. George Gusman, Jr.  
Ms. Iris Ha  
Mr. James Dutae Ha  
Mr. and Mrs. Frederick W.  
Hackbarth  
Randy & Carol Hamamoto  
Mr. Dennis T. Doi  
Mr. and Mrs. Kenneth K. Doi  
Mr. and Mrs. Thomas W.  
Dombeck  
Ms. Edna Domingo  
Mr. and Mrs. Robert L.  
Donaldson  
Ms. Irene M. Donnelly  
Mr. and Mrs. James J. Donovan III  
Toan Do Doran  
Dallas & Sherry Dornan  
DS II Audit Services, Inc.  
Mr. Walter D. Dudinow, Jr.  
Ms. Madeline Duffey  
Ms. Arlene Duncan  
Ms. Marilyn Dunlap  
Ms. Patricia N. Dunn  
Mrs. Carmen Dusza  
Mrs. Joyce S. Dutcher
- Mrs. Diane C. Kanemoto  
Mr. and Mrs. Charles Kaneshiro  
Mr. and Mrs. Dennis T.  
Kaneshiro  
Mrs. Lesley L. Kaneshiro  
Mrs. Lynne M. Kaneta  
Kanoelani Elementary School  
Mrs. Toby A. S. Kapahu  
Ms. Ruth Leoupuakani Kapai  
Mr. and Mrs. Richard E.  
Karamatsu  
Mrs. Jean M. Kashiwaeda  
Ms. Edith S. Katada  
Mr. Guy H. Katayama  
Ms. Janice S. Kato  
Mr. and Mrs. Henry M. Katsuda  
Mr. and Mrs. Melvyn S.  
Kawahara  
Ms. Crissy T. Kawamoto  
Ms. Joella M. Kawamoto  
Ms. Audrey Y. Kawamura  
Mr. and Mrs. Clyde T. Kawano  
Ms. Annette M. Kawasaki  
Ms. Virginia M. Kawachi  
Mr. Jonathan Kea  
Ms. Jackie J. Kekahuna  
Albert & Susan Keliikoolo  
Mrs. Darrah N. Kelly  
Ron & Myra Kent  
Mrs. Barbara Keola  
Mr. and Mrs. Allen K. Kepaa, Jr.  
Mr. and Mrs. William H. E.  
Kern  
Ms. Shezhi S. Khan  
Mrs. Tsuyako S. Kim  
Ms. Patrice N. Kimoto  
Ms. Renee N. Kimoto  
Ms. Shirley M. Kimoto  
Ms. Dorothy M. Kimura  
Mr. and Mrs. Jody H. Kimura  
Ms. Kathleen K. Kimura  
Mr. Randall M. Kimura  
Mr. Robert T. Kimura  
Takao Kimura  
Ms. Annetta J. Kinnicutt  
Ms. Helene R. Kiyono  
Mr. and Mrs. Robert G. Klein  
Rick & Barbara Klemm  
Simon and Lorraine Klevansky  
Ms. Elisabeth Knokke  
Mrs. Eleanor P. Ko  
Mr. and Mrs. Cho H. Ko  
Mrs. Janice K. Kobashigawa  
Ms. Kimberley J. Koide  
Mrs. Nancy N. Koide  
Mr. and Mrs. Bradley H.  
Koziumi  
Mrs. Jana P. C. E. Gaison-  
Terukina  
Mr. and Mrs. Chad K. Gakiya  
Mr. Richard Garcia  
Sheryl P. Gardner  
Mr. Richard Gathers  
Ms. Jennifer M. Gaul  
Ms. Evelyn J. Gerner  
Ms. Lisa H. Gibson  
Mr. Robert E. Gibson  
Mr. Willam C. Gibson  
Mrs. Lisa C. Gillis-Davis  
Ms. Lisa M. Ginoza  
Ms. Annette L.M. Goo  
Ms. Karen Goo  
Mr. Steve A. Goo  
Mr. and Mrs. Chennat  
Gopalakrishnan  
Mrs. Barbara J. Gossard  
Ms. Linda K. Goto  
Ms. Beatrice Gould  
Mr. and Mrs. Clarence L.  
Gouveia  
Mr. and Mrs. John M. Goya  
Mr. Craig W. Graham, Jr.  
Malachy Grange  
Rev. John Granville  
Ms. Rochelle L. Gregson  
Mr. and Mrs. D.B. Griffin III  
Joel & Michel Grostein  
Mr. Duane J. Gubler  
Mrs. Carolyn K. Gugelyk  
Sandra and William Gurowitz  
Ms. Donna Gusman  
Mr. and Mrs. George Gusman, Jr.  
Ms. Iris Ha  
Mr. James Dutae Ha  
Mr. and Mrs. Frederick W.  
Hackbarth  
Randy & Carol Hamamoto  
Mr. Dennis T. Doi  
Mr. and Mrs. Kenneth K. Doi  
Mr. and Mrs. Thomas W.  
Dombeck  
Ms. Edna Domingo  
Mr. and Mrs. Robert L.  
Donaldson  
Ms. Irene M. Donnelly  
Mr. and Mrs. James J. Donovan III  
Toan Do Doran  
Dallas & Sherry Dornan  
DS II Audit Services, Inc.  
Mr. Walter D. Dudinow, Jr.  
Ms. Madeline Duffey  
Ms. Arlene Duncan  
Ms. Marilyn Dunlap  
Ms. Patricia N. Dunn  
Mrs. Carmen Dusza  
Mrs. Joyce S. Dutcher
- Mrs. Diane C. Kanemoto  
Mr. and Mrs. Charles Kaneshiro  
Mr. and Mrs. Dennis T.  
Kaneshiro  
Mrs. Lesley L. Kaneshiro  
Mrs. Lynne M. Kaneta  
Kanoelani Elementary School  
Mrs. Toby A. S. Kapahu  
Ms. Ruth Leoupuakani Kapai  
Mr. and Mrs. Richard E.  
Karamatsu  
Mrs. Jean M. Kashiwaeda  
Ms. Edith S. Katada  
Mr. Guy H. Katayama  
Ms. Janice S. Kato  
Mr. and Mrs. Henry M. Katsuda  
Mr. and Mrs. Melvyn S.  
Kawahara  
Ms. Crissy T. Kawamoto  
Ms. Joella M. Kawamoto  
Ms. Audrey Y. Kawamura  
Mr. and Mrs. Clyde T. Kawano  
Ms. Annette M. Kawasaki  
Ms. Virginia M. Kawachi  
Mr. Jonathan Kea  
Ms. Jackie J. Kekahuna  
Albert & Susan Keliikoolo  
Mrs. Darrah N. Kelly  
Ron & Myra Kent  
Mrs. Barbara Keola  
Mr. and Mrs. Allen K. Kepaa, Jr.  
Mr. and Mrs. William H. E.  
Kern  
Ms. Shezhi S. Khan  
Mrs. Tsuyako S. Kim  
Ms. Patrice N. Kimoto  
Ms. Renee N. Kimoto  
Ms. Shirley M. Kimoto  
Ms. Dorothy M. Kimura  
Mr. and Mrs. Jody H. Kimura  
Ms. Kathleen K. Kimura  
Mr. Randall M. Kimura  
Mr. Robert T. Kimura  
Takao Kimura  
Ms. Annetta J. Kinnicutt  
Ms. Helene R. Kiyono  
Mr. and Mrs. Robert G. Klein  
Rick & Barbara Klemm  
Simon and Lorraine Klevansky  
Ms. Elisabeth Knokke  
Mrs. Eleanor P. Ko  
Mr. and Mrs. Cho H. Ko  
Mrs. Janice K. Kobashigawa  
Ms. Kimberley J. Koide  
Mrs. Nancy N. Koide  
Mr. and Mrs. Bradley H.  
Koziumi  
Mrs. Jana P. C. E. Gaison-  
Terukina  
Mr. and Mrs. Chad K. Gakiya  
Mr. Richard Garcia  
Sheryl P. Gardner  
Mr. Richard Gathers  
Ms. Jennifer M. Gaul  
Ms. Evelyn J. Gerner  
Ms. Lisa H. Gibson  
Mr. Robert E. Gibson  
Mr. Willam C. Gibson  
Mrs. Lisa C. Gillis-Davis  
Ms. Lisa M. Ginoza  
Ms. Annette L.M. Goo  
Ms. Karen Goo  
Mr. Steve A. Goo  
Mr. and Mrs. Chennat  
Gopalakrishnan  
Mrs. Barbara J. Gossard  
Ms. Linda K. Goto  
Ms. Beatrice Gould  
Mr. and Mrs. Clarence L.  
Gouveia  
Mr. and Mrs. John M. Goya  
Mr. Craig W. Graham, Jr.  
Malachy Grange  
Rev. John Granville  
Ms. Rochelle L. Gregson  
Mr. and Mrs. D.B. Griffin III  
Joel & Michel Grostein  
Mr. Duane J. Gubler  
Mrs. Carolyn K. Gugelyk  
Sandra and William Gurowitz  
Ms. Donna Gusman  
Mr. and Mrs. George Gusman, Jr.  
Ms. Iris Ha  
Mr. James Dutae Ha  
Mr. and Mrs. Frederick W.  
Hackbarth  
Randy & Carol Hamamoto  
Mr. Dennis T. Doi  
Mr. and Mrs. Kenneth K. Doi  
Mr. and Mrs. Thomas W.  
Dombeck  
Ms. Edna Domingo  
Mr. and Mrs. Robert L.  
Donaldson  
Ms. Irene M. Donnelly  
Mr. and Mrs. James J. Donovan III  
Toan Do Doran  
Dallas & Sherry Dornan  
DS II Audit Services, Inc.  
Mr. Walter D. Dudinow, Jr.  
Ms. Madeline Duffey  
Ms. Arlene Duncan  
Ms. Marilyn Dunlap  
Ms. Patricia N. Dunn  
Mrs. Carmen Dusza  
Mrs. Joyce S. Dutcher
- Ms. Janice Y. Luis  
Ms. Julie A. A. Lum  
Dr. Walter S.F. Lung  
Mr. Mark F. Luppino  
Mrs. Louisa P. Lynch  
Ms. Lynn S. Ma  
Linda C. Macclendon  
Diane & John MacDonald  
Ms. Norene N. Machida  
Mr. and Mrs. Eugene A.  
Magnier  
James & Alice Mak  
Joseph K. Malina  
Mr. Guy H. Manago  
Mrs. Keiko M. Manapat  
Ms. Ellen S. Mann  
Roy T. Manzoku  
Ms. Carol G.H. Marino  
Mr. Ray S. Marks, Jr.  
Ms. Melanie G. Marshall  
Ms. Antoinette M. Martin  
Mr. and Mrs. Stephen L. Martin  
Mrs. Gina L. Marting  
Mr. Ken S. Marume  
Mr. Glenn Marumoto  
Mr. and Mrs. Vance H.  
Maruyama  
Ms. Carol M. Masuda  
Ms. Coreen Puanani Mata  
Ms. M. Yvonne Matining  
Matthew & Ellen Matoi  
Mr. Glenn Matsuda  
Ms. Roberta L. Matsuda  
Ms. Norma L. Matsukawa  
Mr. H. D. Matsuko  
Gary & Christen Matsushige  
Mr. Dennis K. Matsuura  
Robert Matsuwa  
Mr. Robert Mauraucher  
Ms. Patricia A. Mau-Shimizu  
Mr. and Mrs. Harold J.  
McArthur  
Mrs. Elizabeth McCutcheon  
Ms. Norma V. McDonald  
Mr. Bruce E. McEwan  
Mr. and Mrs. Robert L.  
McFarland II  
Mr. and Mrs. Alan M. McKillop  
Ms. Millie McLean  
Ms. Sophia A. McMillen  
Ms. Theresa C. McMurdo  
Ms. Ruth R. Okubo  
M. J. O'Malley  
Mr. Joseph H. O'Meally  
Ms. Kathryn Omine  
Mr. Michael M. Omiya  
Mr. and Mrs. Kevin O'Neill  
Mr. and Mrs. Dean I. Onishi  
Mr. and Mrs. Anthony Ornellas  
Mr. and Mrs. Charles D.  
Ornellas  
Mrs. Dorothy S. Oshiro  
Mr. and Mrs. Douglas S. Oshiro  
Mr. and Mrs. Kaoru Oshiro  
Ms. Cynthia M. Ota  
Mr. Michael Ota  
Ms. Wanda R. Ota  
Mr. and Mrs. William N. Ota  
Mr. Tom Otake  
Mr. and Mrs. Tamio Otsu  
Mr. Gerald Ouchi  
Mr. and Mrs. James H. Ouchi  
Ms. Sharon S. Ouchi  
Ms. Jody C. Oyama  
Mr. Lance M. Oyama  
Ms. Peggy Oyama  
Ms. Lydia Ozuna  
Mr. and Mrs. Frederic A.  
Pabalan  
Ms. Lori Pacarro  
Ms. Julie R. Padron  
Ms. Sandra M. Pak  
Mr. and Mrs. Keshi K. Palualalo  
Bradley & Candace Pang  
Dora & Philip Pang  
Mrs. Joyce K. Pang  
Mrs. June T. Pang  
Ms. Lily Y. Panu  
Steve & Janis Parker  
Dr. Graham Parkes  
Edward J. Parnell  
Mrs. Nidia Pascua  
Mrs. Annabennita V. Pascual  
Mr. James P. Peabody  
Mr. Paul Bodholdt Pedersen  
Mrs. Edwina L. Pennington  
Ms. Cynthia S. Perkins  
Mr. and Mrs. Russell Perkins  
Thomas & Gordynne Perkins  
Ms. Judith S. Perry  
Mr. and Mrs. Mark J. Perry  
Ms. Solette Perry  
Brad & Barbara Petrus  
Ms. Regina R. Pfeiffer  
Ms. Sandra S. Pfund  
Hiep Duong Phillips  
Ms. Rachelle E. Phillips  
Charles & Trudy Pimentel  
Ms. Sandra R. Pimentel  
Mr. Jerry D. Pinell  
Mr. William T. Pirtle  
Ms. Amber Plank  
Ms. Jennifer Plevel  
Ms. Jodi K. Poaha  
Ms. Anne Lee Pohner
- Ms. Carolyn D. Nakagawa  
Mr. Peter N. Nakagawa  
Glenn & Sandy Nakai  
Ms. Norma M. Nakakura  
Ms. Claire Y. Nakamura  
Mr. and Mrs. Herbert I.  
Nakamura  
Mr. and Mrs. Oscar T.  
Nakamura  
Ms. Lynn E. Nakamura  
Mr. and Mrs. Bruce A.  
Nakamura  
Ms. Susan F. Nakamura  
Ms. Cindy L. Nakashima  
Mr. and Mrs. Wesley  
Nakashima  
Ms. Laura F. Nakasone  
Kevin & Michele Nakata  
Ms. Perlitia M. Nam  
Mr. and Mrs. Michael W.  
Newman  
Oanh T. Nguyen  
Mrs. Joan U. Nihei  
Mr. and Mrs. Glenn Niitani  
Mr. Kerry S. Niitani  
Ms. Cynthia Y. Ning  
Mr. John Y. Yamano and Ms.  
Sharon H. Nishi  
Mr. Roland J. Nishimura  
Mr. and Mrs. Frank M. Nomura  
Nancy W. Nottage  
Joseph & Linda Oba  
Ms. Laura K. Oba  
Mr. William G. Obana  
Ms. Verna S. Oda  
Mr. and Mrs. William M. Oda  
Mr. Joseph A. Odette  
Mr. and Mrs. Stephen Odo  
Roy & Sakae Ogawa  
Mr. Nyles M. Ohta  
Ms. Amy Okamoto  
Mrs. Maura Okamoto  
Harry & Joyce Okamoto  
Mr. and Mrs. Darrell M.  
Okamoto  
Mr. Jonathan Y. Okamura  
Mr. and Mrs. Raymond T.  
Okamura  
Ms. Carol Okimi  
Mary Jane and Brian Okimoto  
Mr. Roy Okino  
Ms. Ruth R. Okubo  
M. J. O'Malley  
Mr. Joseph H. O'Meally  
Ms. Kathryn Omine  
Mr. Michael M. Omiya  
Mr. and Mrs. Kevin O'Neill  
Mr. and Mrs. Dean I. Onishi  
Mr. and Mrs. Anthony Ornellas  
Mr. and Mrs. Charles D.  
Ornellas  
Mrs. Dorothy S. Oshiro  
Mr. and Mrs. Douglas S. Oshiro  
Mr. and Mrs. Kaoru Oshiro  
Ms. Cynthia M. Ota  
Mr. Michael Ota  
Ms. Wanda R. Ota  
Mr. and Mrs. William N. Ota  
Mr. Tom Otake  
Mr. and Mrs. Tamio Otsu  
Mr. Gerald Ouchi  
Mr. and Mrs. James H. Ouchi  
Ms. Sharon S. Ouchi  
Ms. Jody C. Oyama  
Mr. Lance M. Oyama  
Ms. Peggy Oyama  
Ms. Lydia Ozuna  
Mr. and Mrs. Frederic A.  
Pabalan  
Ms. Lori Pacarro  
Ms. Julie R. Padron  
Ms. Sandra M. Pak  
Mr. and Mrs. Keshi K. Palualalo  
Bradley & Candace Pang  
Dora & Philip Pang  
Mrs. Joyce K. Pang  
Mrs. June T. Pang  
Ms. Lily Y. Panu  
Steve & Janis Parker  
Dr. Graham Parkes  
Edward J. Parnell  
Mrs. Nidia Pascua  
Mrs. Annabennita V. Pascual  
Mr. James P. Peabody  
Mr. Paul Bodholdt Pedersen  
Mrs. Edwina L. Pennington  
Ms. Cynthia S. Perkins  
Mr. and Mrs. Russell Perkins  
Thomas & Gordynne Perkins  
Ms. Judith S. Perry  
Mr. and Mrs. Mark J. Perry  
Ms. Solette Perry  
Brad & Barbara Petrus  
Ms. Regina R. Pfeiffer  
Ms. Sandra S. Pfund  
Hiep Duong Phillips  
Ms. Rachelle E. Phillips  
Charles & Trudy Pimentel  
Ms. Sandra R. Pimentel  
Mr. Jerry D. Pinell  
Mr. William T. Pirtle  
Ms. Amber Plank  
Ms. Jennifer Plevel  
Ms. Jodi K. Poaha  
Ms. Anne Lee Pohner
- Mr. Julio C. Polo  
Mr. and Mrs. Jon Polokoff  
Ms. Winfred K.T. Pong  
Ms. Kay A. Pongtes  
Mr. Robert J. Porter  
Arthur & Vayne Pregill  
Ms. Grace Prinsler  
Mr. Adam Prinsler  
Ms. Renee' Puckett  
Queen Liliuokalani Children  
Center  
C. L. Quesinberry  
Mr. and Mrs. Bernard C.  
Quinlan  
Ms. Ruth Marie Quirk  
R.K. Oshiro Door Servicing Co.  
Rainbow Sales and Marketing  
Ms. Susan Raposa  
Mr. and Mrs. Rajkumar Rath  
Mr. Ira G. Ratner  
Ms. Julie Rawlins  
Mr. Roberto Reggio  
Reign Enterprises, LLC  
Mrs. Lee Ann H. Reilly  
Robert & Ursula Retherford  
Ms. Edralin F. Reyes  
Mr. and Mrs. Alexander E. Rice  
Ms. Diane N. Riley  
Ms. Erma C. Riold  
Sandra E. Ritz  
K.S. Riles, Inc.  
Mr. Don Robbins  
Mr. George C. Robello, Jr.  
Ms. A. Kathleen Robertson  
Mr. Allen C. Robertson and  
Mrs. El Dora K. Robertson  
Mr. and Mrs. Robert Y.  
Rocheleau  
Teri & Charles Rokero  
Mike Moran  
Mr. Marc E. Rousseau  
Mrs. Margaret Rowland  
J Rubano  
Curt & Christine Ruotola  
Ms. Alida Rutchick  
Ms. Faith H. Sabat  
Mr. Edmund Saffery  
Mel H. Saiki  
Mr. Masuji Saito  
Ms. Megan Y. Saito  
Mr. Randall T. Saito  
Ms. Susan Saka  
Ms. Arlynn C. Sakamoto  
Ms. Karen K. Sakamoto  
Ms. Sharon S. Sakamoto  
Mrs. Sue L. Sakata  
Mr. and Mrs. Steven Sakata  
Ms. Sarah Y. Sakihara  
Mr. and Mrs. Joseph A. Q. Salas  
Ms. Rose Sales  
Mr. Franco Salmoiraghi  
Mr. Tony A. Salvador  
Ms. Lani C. Samson  
Mrs. R. Ruth Samuel  
Allan & Shirley Samuelson  
Mr. and Mrs. Todd W. Sanders  
Mrs. Debora T. K. Sanehira  
Rene Sanchira  
Mr. Alfred T. Sank  
Mr. Ned D. Santa Ana  
Larry B. Santiago  
Ms. Eva P. Santos  
Mrs. Pat A. Santos  
Ms. Maureen L. Sapienza  
Dr. Judith Y. Saramchok  
Mrs. Peggy T. Sasaki  
Mr. and Mrs. Isaac K. Sato  
Mr. and Mrs. Nobuo Sato  
Mr. Patrick N. Sato  
Mr. and Mrs. Patrick T. Sawai  
Mrs. Hisayo Say  
Mr. Stanley Schab  
Ms. Marilyn Schoenke  
Ms. Jane B. Schroeder  
Mr. and Mrs. Timothy F.  
Schroth  
Mr. Paul J. Schwind  
Scion Evolution - Hawaii  
Chapter  
Mr. and Mrs. Robert Seaver  
Seleni Family  
Ms. June A. Seo  
Mrs. Ethel K. Serikaku  
Ms. Marjorie A. Shepherd  
Ms. Cassandra Sherod  
Mrs. Sharon R. Shigemasa  
Mr. and Mrs. Jon K. Shigemitsu  
Ms. Holly T. Shikada  
Ms. Lorna S. Shima  
Mr. Mike T. Shimabukuro  
Ms. Petula J. Shimabukuro  
Ms. Ann S. K. Shimatsu  
Gregg A. Shimomura, M.D.  
Mr. Stanley A. Shimote  
Mrs. Elizabeth D. Shippen  
Roy & Jane Shirafuji  
Mr. and Mrs. Melvin A.  
Shiratori  
Ms. Melvyn S. Shiroma  
Dr. Vernon H. Shiroma  
Mr. Wilfred T. Shiroma  
Ms. Jennifer K. Shishido  
Mr. David Shope  
Janice & Stephen Shoultz  
Ms. Naomi K. Silva
- Ms. Alison Simmons  
Mr. Kenneth Simon  
Ms. Judy W. Simpson  
Ms. Diana Sison  
Mr. and Mrs. Kenneth N. Sitoh  
Mr. and Mrs. Donald A. Six  
April R. Smith  
Daniel & Rosalie Smith  
Ms. Cynthia T. Soneda  
Ms. Valerie L. Song  
Melvin & Barbara Soong  
Mr. John P. Sosa  
Spectrum Wealth Management,  
LLC  
Mr. John E. Spencer  
Ms. Diane R. Spindle  
Ms. Joanne Spletter  
St. Elizabeth School  
St. Francis Healthcare System of  
Hawaii  
Mr. Richard B. Stack, Jr.  
Mr. Robert N. Stanfield IV  
Honolulu Star-Bulletin  
State of Hawaii - Office of  
Hawaiian Affairs  
State of Hawaii - Office of the  
Auditor  
Mr. and Mrs. William Steinhoff  
Daniel & Angela Stempel  
Mr. and Mrs. Thomas G. Stewart  
Mrs. Elizabeth B. Stickey  
Mr. and Mrs. Daniel Q.K.  
Stone, Jr.  
Mrs. Susan H. Sublett-Graham  
Ms. Napua N. Sugai  
Mr. and Mrs. Paul K.  
Sugihayashi  
Mr. Alan B. Sugihara  
Ms. Dawn T. Sugihara  
Mr. and Mrs. Dennis Y.  
Sugimoto  
Mr. and Mrs. Erin Naomii Sugita  
Donna and Scott Sullivan  
Mrs. Liann T. Sumida  
Mrs. Lyne A. Sumida  
William & Mary Suetani  
Mrs. Joyce T. Suzuki  
Mr. Wayne M. Suzuki  
Mr. and Mrs. Richard Y. Tabe  
Mr. Richard A. K. C. Tachera, Jr.  
Mrs. Jonina I. Tagalog  
Ms. Deborah N. Taira  
Mrs. Ellen Tajima  
Mr. and Mrs. Walter Takafuji  
Ms. Julie S. Takahashi  
Mr. and Mrs. Lance K.  
Takahashi  
Mr. and Mrs. Paul H. Takaki  
Mr. and Mrs. Kevin H. Takamori  
Mr. Roy R. Takamune  
Mitsuo Takayama  
Jerald S. Takesono, D.D.S.  
Setsuko Takeuchi  
Mrs. Pamela M. Takiguchi  
Ms. Carole A. Takushi  
Mr. R. S. Tallavall  
Ms. Catherine R. Tamananah  
Diane K. Tamananah  
Mrs. Vivien P. Tamashiro  
Mr. and Mrs. Curtis K. Tanaka  
Ms. Gwen Tanaka  
Ms. Kay A. Tanaka  
Mr. Kevin K. Tanaka  
Ronald & Linda Tang  
Mr. Richard M. Tangoman  
Mr. and Mrs. Hiroto Tano  
Ms. Victoria T. Tarantino  
Ms. Gayla N. Taramoto  
Mr. Craig Tasaka  
Isamu Tatsuguchi  
Mr. Myron M. Monte and Ms.  
Barbara J. Favares  
Ms. Renee F. Favares  
Mr. Justus F. Taylor  
Mrs. Laura L. S. Tefft  
Mrs. Sandra S. Teixeira  
Emiliano and Jean Tembler  
Denise & Joy Teraoka  
Terence Q. L. Young D.D.S.,  
INC.  
Mrs. Beatrice A. Terumoto  
Ms. Lynette K. Teruya  
Mrs. Annie K. Thomas  
Mr. Douglas C. Thomas  
Mr. Ken R. Thomas  
Ms. Patricia Ann Tierney  
Ms. Eileen P. Tiwanak  
Mr. and Mrs. Jon K. Shigemitsu  
Ms. Holly T. Shikada  
Ms. Lorna S. Shima  
Mr. Mike T. Shimabukuro  
Ms. Petula J. Shimabukuro  
Ms. Ann S. K. Shimatsu  
Gregg A. Shimomura, M.D.  
Mr. Stanley A. Shimote  
Mrs. Elizabeth D. Shippen  
Roy & Jane Shirafuji  
Mr. and Mrs. Melvin A.  
Shiratori  
Ms. Melvyn S. Shiroma  
Dr. Vernon H. Shiroma  
Mr. Wilfred T. Shiroma  
Ms. Jennifer K. Shishido  
Mr. David Shope  
Janice & Stephen Shoultz  
Ms. Naomi K. Silva
- Mrs. Diane C. Kanemoto  
Mr. and Mrs. Charles Kaneshiro  
Mr. and Mrs. Dennis T.  
Kaneshiro  
Mrs. Lesley L. Kaneshiro  
Mrs. Lynne M. Kaneta  
Kanoelani Elementary School  
Mrs. Toby A. S. Kapahu  
Ms. Ruth Leoupuakani Kapai  
Mr. and Mrs. Richard E.  
Karamatsu  
Mrs. Jean M. Kashiwaeda  
Ms. Edith S. Katada  
Mr. Guy H. Katayama  
Ms. Janice S. Kato  
Mr. and Mrs. Henry M. Katsuda  
Mr. and Mrs. Melvyn S.  
Kawahara  
Ms. Crissy T. Kawamoto  
Ms. Joella M. Kawamoto  
Ms. Audrey Y. Kawamura  
Mr. and Mrs. Clyde T. Kawano  
Ms. Annette M. Kawasaki  
Ms. Virginia M. Kawachi  
Mr. Jonathan Kea  
Ms. Jackie J. Kekahuna  
Albert & Susan Keliikoolo  
Mrs. Darrah N. Kelly  
Ron & Myra Kent  
Mrs. Barbara Keola  
Mr. and Mrs. Allen K. Kepaa, Jr.  
Mr. and Mrs. William H. E.  
Kern  
Ms. Shezhi S. Khan  
Mrs. Tsuyako S. Kim  
Ms. Patrice N. Kimoto  
Ms. Renee N. Kimoto  
Ms. Shirley M. Kimoto  
Ms. Dorothy M. Kimura  
Mr. and Mrs. Jody H. Kimura  
Ms. Kathleen K. Kimura  
Mr. Randall M. Kimura  
Mr. Robert T. Kimura  
Takao Kimura  
Ms. Annetta J. Kinnicutt  
Ms. Helene R. Kiyono  
Mr. and Mrs. Robert G. Klein  
Rick & Barbara Klemm  
Simon and Lorraine Klevansky  
Ms. Elisabeth Knokke  
Mrs. Eleanor P. Ko  
Mr. and Mrs. Cho H. Ko  
Mrs. Janice K. Kobashigawa  
Ms. Kimberley J. Koide  
Mrs. Nancy N. Koide  
Mr. and Mrs. Bradley H.  
Koziumi  
Mrs. Jana P. C. E. Gaison-  
Terukina  
Mr. and Mrs. Chad K. Gakiya  
Mr. Richard Garcia  
Sheryl P. Gardner  
Mr. Richard Gathers  
Ms. Jennifer M. Gaul  
Ms. Evelyn J. Gerner  
Ms. Lisa H. Gibson  
Mr. Robert E. Gibson  
Mr. Willam C. Gibson  
Mrs. Lisa C. Gillis-Davis  
Ms. Lisa M. Ginoza  
Ms. Annette L.M. Goo  
Ms. Karen Goo  
Mr. Steve A. Goo  
Mr. and Mrs. Chennat  
Gopalakrishnan  
Mrs. Barbara J. Gossard  
Ms. Linda K. Goto  
Ms. Beatrice Gould  
Mr. and Mrs. Clarence L.  
Gouveia  
Mr. and Mrs. John M. Goya  
Mr. Craig W. Graham, Jr.  
Malachy Grange  
Rev. John Granville  
Ms. Rochelle L. Gregson  
Mr. and Mrs. D.B. Griffin III  
Joel & Michel Grostein  
Mr. Duane J. Gubler  
Mrs. Carolyn K. Gugelyk  
Sandra and William Gurowitz  
Ms. Donna Gusman  
Mr. and Mrs. George Gusman, Jr.  
Ms. Iris Ha  
Mr. James Dutae Ha  
Mr. and Mrs. Frederick W.  
Hackbarth  
Randy & Carol Hamamoto  
Mr. Dennis T. Doi  
Mr. and Mrs. Kenneth K. Doi  
Mr. and Mrs. Thomas W.  
Dombeck  
Ms. Edna Domingo  
Mr. and Mrs. Robert L.  
Donaldson  
Ms. Irene M. Donnelly  
Mr. and Mrs. James J. Donovan III  
Toan Do Doran  
Dallas & Sherry Dornan  
DS II Audit Services, Inc.  
Mr. Walter D. Dudinow, Jr.  
Ms. Madeline Duffey  
Ms. Arlene Duncan  
Ms. Marilyn Dunlap  
Ms. Patricia N. Dunn  
Mrs. Carmen Dusza  
Mrs. Joyce S. Dutcher
- Mrs. Diane C. Kanemoto  
Mr. and Mrs. Charles Kaneshiro  
Mr. and Mrs. Dennis T.  
Kaneshiro  
Mrs. Lesley L. Kaneshiro  
Mrs. Lynne M. Kaneta  
Kanoelani Elementary School  
Mrs. Toby A. S. Kapahu  
Ms. Ruth Leoupuakani Kapai  
Mr. and Mrs. Richard E.  
Karamatsu  
Mrs. Jean M. Kashiwaeda  
Ms. Edith S. Katada  
Mr. Guy H. Katayama  
Ms. Janice S. Kato  
Mr. and Mrs. Henry M. Katsuda  
Mr. and Mrs. Melvyn S.  
Kawahara  
Ms. Crissy T. Kawamoto  
Ms. Joella M. Kawamoto  
Ms. Audrey Y. Kawamura  
Mr. and Mrs. Clyde T. Kawano  
Ms. Annette M. Kawasaki  
Ms. Virginia M. Kawachi  
Mr. Jonathan Kea  
Ms. Jackie J. Kekahuna  
Albert & Susan Keliikoolo  
Mrs. Darrah N. Kelly  
Ron & Myra Kent  
Mrs. Barbara Keola  
Mr. and Mrs. Allen K. Kepaa, Jr.  
Mr. and Mrs. William H. E.  
Kern  
Ms. Shezhi S. Khan  
Mrs. Tsuyako S. Kim  
Ms. Patrice N. Kimoto  
Ms. Renee N. Kimoto  
Ms. Shirley M. Kimoto  
Ms. Dorothy M. Kimura  
Mr. and Mrs. Jody H. Kimura  
Ms. Kathleen K. Kimura  
Mr. Randall M. Kimura  
Mr. Robert T. Kimura  
Takao Kimura  
Ms. Annetta J. Kinnicutt  
Ms. Helene R. Kiyono  
Mr. and Mrs. Robert G. Klein  
Rick & Barbara Klemm  
Simon and Lorraine Klevansky  
Ms. Elisabeth Knokke  
Mrs. Eleanor P. Ko  
Mr. and Mrs. Cho H. Ko  
Mrs. Janice K. Kobashigawa  
Ms. Kimberley J. Koide  
Mrs. Nancy N. Koide  
Mr. and Mrs. Bradley H.  
Koziumi  
Mrs. Jana P. C. E. Gaison-  
Terukina  
Mr. and Mrs. Chad K. Gakiya  
Mr. Richard Garcia  
Sheryl P. Gardner  
Mr. Richard Gathers  
Ms. Jennifer M. Gaul  
Ms. Evelyn J. Gerner  
Ms. Lisa H. Gibson  
Mr. Robert E. Gibson  
Mr. Willam C. Gibson  
Mrs. Lisa C. Gillis-Davis  
Ms. Lisa M. Ginoza  
Ms. Annette L.M. Goo  
Ms. Karen Goo  
Mr. Steve A. Goo  
Mr. and Mrs. Chennat  
Gopalakrishnan  
Mrs. Barbara J. Gossard  
Ms. Linda K. Goto  
Ms. Beatrice Gould  
Mr. and Mrs. Clarence L.  
Gouveia  
Mr. and Mrs. John M. Goya  
Mr. Craig W. Graham, Jr.  
Malachy Grange  
Rev. John Granville  
Ms. Rochelle L. Gregson  
Mr. and Mrs. D.B. Griffin III  
Joel & Michel Grostein  
Mr. Duane J. Gubler  
Mrs. Carolyn K. Gugelyk  
Sandra and William Gurowitz  
Ms. Donna Gusman  
Mr. and Mrs. George Gusman, Jr.  
Ms. Iris Ha  
Mr. James Dutae Ha  
Mr. and Mrs. Frederick W.  
Hackbarth  
Randy & Carol Hamamoto  
Mr. Dennis T. Doi  
Mr. and Mrs. Kenneth K. Doi  
Mr. and Mrs. Thomas W.  
Dombeck  
Ms. Edna Domingo  
Mr. and Mrs. Robert L.  
Donaldson  
Ms. Irene M. Donnelly  
Mr. and Mrs. James J. Donovan III  
Toan Do Doran  
Dallas & Sherry Dornan  
DS II Audit Services, Inc.  
Mr. Walter D. Dudinow, Jr.  
Ms. Madeline Duffey  
Ms. Arlene Duncan  
Ms. Marilyn Dunlap  
Ms. Patricia N. Dunn  
Mrs. Carmen Dusza  
Mrs. Joyce S. Dutcher
- Mrs. Diane C. Kanemoto  
Mr. and Mrs. Charles Kaneshiro  
Mr. and Mrs. Dennis T.  
Kaneshiro  
Mrs. Lesley L. Kaneshiro  
Mrs. Lynne M. Kaneta  
Kanoelani Elementary School  
Mrs. Toby A. S. Kapahu  
Ms. Ruth Leoupuakani Kapai  
Mr. and Mrs. Richard E.  
Karamatsu  
Mrs. Jean M. Kashiwaeda  
Ms. Edith S. Katada  
Mr. Guy H. Katayama  
Ms. Janice S. Kato  
Mr. and Mrs. Henry M. Katsuda  
Mr. and Mrs. Melvyn S.  
Kawahara  
Ms. Crissy T. Kawamoto  
Ms. Joella M. Kawamoto  
Ms. Audrey Y. Kawamura  
Mr. and Mrs. Clyde T. Kawano  
Ms. Annette M. Kawasaki  
Ms. Virginia M. Kawachi  
Mr. Jonathan Kea  
Ms. Jackie J. Kekahuna  
Albert & Susan Keliikoolo  
Mrs. Darrah N. Kelly  
Ron & Myra Kent  
Mrs. Barbara Keola  
Mr. and Mrs. Allen K. Kepaa, Jr.  
Mr. and Mrs. William H. E.  
Kern  
Ms. Shezhi S. Khan  
Mrs. Tsuyako S. Kim  
Ms. Patrice N. Kimoto  
Ms. Renee N. Kimoto  
Ms. Shirley M. Kimoto  
Ms. Dorothy M. Kimura  
Mr. and Mrs. Jody H. Kimura  
Ms. Kathleen K. Kimura  
Mr. Randall M. Kimura  
Mr. Robert T. Kimura  
Takao Kimura  
Ms. Annetta J. Kinnicutt  
Ms. Helene R. Kiyono  
Mr. and Mrs. Robert G. Klein  
Rick & Barbara Klemm  
Simon and Lorraine Klevansky  
Ms. Elisabeth Knokke  
Mrs. Eleanor P. Ko  
Mr. and Mrs. Cho H. Ko  
Mrs. Janice K. Kobashigawa  
Ms. Kimberley J. Koide  
Mrs. Nancy N. Koide  
Mr. and Mrs. Bradley H.  
Koziumi  
Mrs. Jana P. C. E. Gaison-  
Terukina  
Mr. and Mrs. Chad K. Gakiya  
Mr. Richard Garcia  
Sheryl P. Gardner  
Mr. Richard Gathers  
Ms

Transpacific Valuation INC  
 Mr. Daniel R. Tranzillo  
 Ms. Jennifer J. Trap  
 Mr. Steve R. Trice  
 Mr. and Mrs. Emory D. Troyer, Jr.  
 Mr. Bruce T. Tsuchida  
 Tomoko Tsukazaki  
 Mr. and Mrs. Peter T. Tsunoda  
 Mr. and Mrs. Dennis M. Tsuruda  
 Mrs. Johanna A. Tupper  
 Mr. Scott Q. Turn  
 Mr. Shigeru Uehara  
 Mrs. Agnes A. Uemura  
 Ms. Lisa K. Uemura  
 Mr. and Mrs. Paul K. Uemura  
 Ms. Jenna L. Umiama  
 University of Hawaii - College of Engineering  
 University of Hawaii - Facilities, Grounds, Safety Mgmt.  
 University of Hawaii - President's Office  
 David H. Uyechi  
 Ms. Jean Y. Uyebara  
 Ms. Lori Y. Uyebara  
 Mr. and Mrs. Ryan T. Uyematsu  
 Mrs. Karen Valasek  
 Mr. and Mrs. Richard H. Van Horn  
 Ms. Christine M. H. Vincent  
 Mr. Richard Y. Wada  
 Mr. and Mrs. Peter H. Wagner  
 Ms. Florence H. Wakuya  
 Mr. John W. Walsh  
 Mr. Wesley Watahina  
 Dr. Jack H. Ward  
 Charles & Mary Warrington  
 Mr. Byron Watanabe  
 Ms. Jennifer Watanabe  
 Ms. Joy S. Watanabe  
 Ms. Kathleen S. Watanabe  
 Mr. Albert T. Wataoka  
 Mrs. Sandra E. Wataoka  
 H. Wayne  
 Mr. and Mrs. David A. Webber  
 Ms. Edna V. Weeks  
 Mr. Stephen E. Wehrman  
 Mr. Michael Weinstein  
 Mr. and Mrs. Michael J. Weir  
 Mr. Howard Calvert Wiig  
 Walter F. Wild, Ph.D.  
 Ms. Rene A. Wilkins  
 Ms. Wanda C. K. Williams  
 Ms. Jean A. Wolfe  
 Ms. Elizabeth Wong  
 Ms. Grace Wong  
 Hei Wai Wong  
 Mr. Kiman Wong  
 Wong Kong Har Tong Society  
 Ms. Lisa S.Y. Wong  
 Ms. Robynette L.H. Wong  
 Mr. and Mrs. Ruddy K. T. Wong  
 Mr. and Mrs. Samuel K.S. Wong  
 Mrs. Sandra Wong  
 Sze Man Wong  
 Ms. Vanessa S. Wong  
 Mr. and Mrs. T. David Woo  
 Ms. Lou Ann Woodwell  
 Mr. and Mrs. Peter A. Yagi  
 Mr. Ken Yamada  
 C. & C. Yamaguchi  
 Mr. and Mrs. Cy H. Yamamoto  
 Ms. Diane K. Yamamoto  
 Mr. Randall R. Yamamoto  
 Mr. and Mrs. Seiji Yamamoto  
 Mr. Suetki Yamamoto  
 Ms. Rowena Marquez Yamane  
 Mrs. Susan P. Yamane-Carpenter  
 Brian & Susan Yamasaki  
 Yuzuru & Alice Yamasaki  
 Mrs. Alison M. Yang-Michimoto  
 Ms. Norma T. Yang  
 J. Yasuda  
 Jonathan & Karen Yasuda  
 Mr. and Mrs. Julian R. Yates III  
 Mr. and Mrs. Koji Yatogo  
 Mr. and Mrs. Lester T. Yazawa  
 Mrs. Constance Yee  
 Mr. and Ms. Edward M. L. Yee  
 Ms. Janelle L. Yee  
 Melvin & Jean Yee  
 Ms. Misao Yim  
 Mr. and Mrs. Nathan M. G. Yim  
 Sally and Wallace Yokota  
 Mr. Gary Len Yokoyama  
 Mr. Raymond M. Yonamine  
 Ms. Kay Yoshinegi  
 Ms. Denise P.Q. Yoshimoto  
 Ms. Kelly K. Yoshimoto  
 Mr. and Mrs. Ward Yoshimura  
 Major Steven H. Yoshimura  
 Ms. Joyce O. Yoshino  
 Mrs. Barbara Yoshioka  
 Mrs. Judith E. Yoshioka  
 Mrs. Jean Yoshizaki  
 Mr. and Mrs. Allen Young  
 Ms. Dara Young  
 Ms. Diane Young  
 Mr. Eric S.T. Young  
 Ms. Kimberly Young  
 Mr. Maynard Young  
 Mrs. Penelope N. Yuen  
 Mr. William Yuen  
 Zhengxing Yun  
 Mr. and Mrs. Blyne K. Zakahi  
 Harold & Beverly Zane

**HONOR DONORS**

Anonymous  
*in honor of Christ Michael Dr. and Mrs. Gary Blach*  
*in honor of Hoagy Gamble*  
 Mr. and Mrs. John A. Carter  
*in honor of Marie Hansen*  
 Anonymous  
*in honor of Randy Young*  
 Anonymous  
*in honor of Stanley Chun*  
 Anonymous  
*in honor of Nanea and Aislen*  
 Mrs. Sheri-Ann Dennis  
*in honor of Emma Mix*  
 Ms. Arlene Duncan  
*in honor of Donna Duncan*  
 Mr. Thomas K. Duvauchelle  
*in honor of Maluhia Hospital*  
 Tulifau and Trina Escene  
*in honor of Our soldiers serving overseas*  
 Mr. Umon Y. Ewart  
*in honor of Uson and Lani Ewart*  
 G. Fischer  
*in honor of Marie Hansen*  
 Mr. Thomas Graham Gans  
*in honor of Dr. Dian A. Dooley*  
 Anonymous  
*in honor of Mike Provost - Saints Peter and Paul Church*  
 Mr. Lloyd Guthrie  
*in honor of Janet Liang*  
 Ms. Linda M. Heloskie  
*in honor of Deborah Heloskie*  
 Anonymous  
*in honor of Jade Moon*  
 Mr. and Mrs. Arthur Joao  
*in honor of Raymond M. Joao, Adeline Mercer, Dorothy Turbeville, Charlotte Villarin*  
 Anonymous  
*in honor of U.S. Military*  
 Anonymous  
*in honor of The Matory Family*  
 Ms. Shehzi S. Khan  
*in honor of Dr. and Mrs. M. Asad Khan*  
 Ms. Debbie Kini  
*in honor of Our Heavenly Father*  
 Ms. Annetta J. Kinnicutt  
*in honor of Children of Hawaii*  
 Anonymous  
*in honor of St. Anthony*  
 Ms. Emily Jia-Leir Lee  
*in honor of Yu Feng Lin Tseng*  
 Al and Kathleen Linton  
*in honor of Emma Mix*  
 Alfred and Pearl Lunt  
*in honor of Jesus Christ*  
 Prof. Richard S. Miller  
*in honor of Doris S. Miller*  
 Anonymous  
*in honor of 16th Infantry Regiment of the U.S. Army*  
 Sarah and Walt Mix  
*in honor of Emma Mix*  
 Anonymous  
*in honor of Henry C. Char*  
 Ms. Jeanette Murphy  
*in honor of Janet H. Murphy*  
 Anonymous  
*in honor of Our Heavenly Father*  
 Anonymous  
*in honor of Gus & Bear*  
 Samir and Nita Patel  
*in honor of Our mother*  
 Anonymous  
*in honor of Keahola Kelekolio*  
 Mr. Kelley C. Roberson  
*in honor of Maria Green, newborn daughter of Dr. and Mrs. Joshua Green*  
 Ms. Alison Robitaille  
*in honor of Trajen Thomson*  
 Ms. Alida Rutchick  
*in honor of Aaron Akina's Graduation*  
 Mr. and Mrs. Robert Seaver  
*in honor of Emma Mix*  
 Anonymous  
*in honor of Jesus Christ*  
 Anonymous  
*in honor of Marie Hansen*  
 Spectrum Wealth Management LLC  
*in honor of Our clients*  
 Mrs. Susan R. Tamara  
*in honor of Bob and Helen Rogers*  
 Mr. Richard T. Tanaka  
*in honor of AhFah & Yvette Akamu*  
 Mashyang Ling Mailli Kianakaua Tate  
*in honor of Hungary Hawaiians*  
 Mr. Erik Tong  
*in honor of Bob and Ricardo*  
 Mr. Arthur J. Usher IV  
*in honor of Dr. Robert Patterson*  
 Anonymous  
*in honor of Jude Moon*

**BIRTHDAY DONORS**

Ms. Calleen J. Ching  
 William Lum  
 Mr. and Mrs. Anthony Ornellas  
*Julia Beavers' 1st birthday*  
 Ms. Jody C. Oyama  
*My 50th birthday*  
 Anonymous  
*A good deed of my birthday*

**MEMORIAL DONORS**

Ms. Sarah E.K. Akaka-Truong  
*in memory of Rev. Abraham K. Akaka*  
 Anonymous  
*in memory of All military veterans*  
 Mr. Henry Almoodva  
*in memory of Isabel Kimiko Almoodva*  
 Anonymous  
*in memory of Amanda*  
 Della and Bruce Kawabata  
*in memory of Buster K. Ariyoshi*  
 Anonymous  
*in memory of Paul Bacon*  
 Ms. Arlynn C. Sakamoto  
*in memory of Charles Balason*  
 Mr. James M. Bredberg, Sr.  
*in memory of C. Levi Bredberg*  
 Mr. Robert T. Mann  
*in memory of Rildah Brogden*  
 Anonymous  
*in memory of Jimmy Byington*  
 Guy S. Cabral  
*in memory of Suelo Cabral*  
 Tom and Suzanne Cajski  
 Ms. Agnes L. Stahl  
*in memory of Noa Cardus, my son*  
 Anonymous  
*in memory of Ezekiel and Ida Carvalho*  
 Mrs. Charlotte C. Bara  
*in memory of Leonard Castillo*  
 Mr. Chi Yon Kim  
*in memory of CEK*  
 Anonymous  
*in memory of Pam G.S. Chang*  
 Ms. Teresa Rendon  
*in memory of Synphorose R. Chavez*  
 Ms. Lila Chun Chrystal  
*in memory of James Chrystal*  
 Teri and Charles Rokero  
*in memory of Chuckie*  
 Anonymous  
*in memory of Elsie Chun*  
 Mrs. Susan M. Haire  
*in memory of Gloria Corley*  
 Anonymous  
*in memory of Kam Shui Fai and Daniel Y.L. Wat*  
 Anonymous  
*in memory of Jim Degnan*  
 Dale P. Vehement  
*in memory of Delfin and Annette*  
 Anonymous  
*in memory of Dennis and Kyle*  
 Mr. Kenneth L. DeSantos, Jr.  
*in memory of Carol DeSantos*  
 Anonymous  
*in memory of L. Stewart Diamond*  
 Ms. Susan J. Dougherty  
*in memory of David M. Dougherty*  
 Anonymous  
*in memory of John and Ann Drury*  
 Ms. Jackie J. Kekahuna  
*in memory of Mom Mabel and sister Gerry Santiago, due to cancer 2006*  
 Ms. Victoria G. Dworkin  
*in memory of Harry Dworkin*  
 Anonymous  
*in memory of William F. Ehrman*  
 Ms. Jennifer M. Gaul  
*in memory of Rose Marie Eischeid*  
 Anonymous  
*in memory of Marilyn Fernandez*  
 Mr. and Mrs. Emory D. Troyer, Jr.  
*in memory of William M. Fields*  
 Molly M. Gluek Polanski  
*in memory of Foxy Lady*  
 R. and B. Suenaga  
*in memory of F.C. Freitas*  
 Mr. and Mrs. Robert M. Gayer  
*in memory of Nelson F. Gayer*  
 Anonymous  
*in memory of George*  
 Robert and Connie Gonzalez  
*in memory of Irene Gonzalez Pratt*  
 Anonymous  
*in memory of Grandpa Jesse*  
 Anonymous  
*in memory of Raul Guerrero*  
 Anonymous  
*in memory of Clifford Harrington*  
 Anonymous  
*in memory of Jean Hata*  
 Vocational Management Consultants, Inc.  
*in memory of Marjorie F. Hirokawa*  
 Anonymous  
*in memory of Karen Honke*  
 Mrs. Chona A. Montesines-Sonido  
*in memory of Patria Noomita Jamilian*  
 Anonymous  
*in memory of Joshua Ben Joseph*  
 Anonymous  
*in memory of Raymond Kalili, Jr.*  
 Norman and Jane Uyechi  
*in memory of George Kaneshiro*  
 Anonymous  
*in memory of Seiko Kaneshiro*  
 Karen Yabui  
*in memory of Karen Kanow*  
 Mr. and Mrs. Allen Napoleon  
*in memory of Kapakai*  
 Anonymous  
*in memory of Del Kenner*

Anonymous  
*in memory of Jack Kerouac*  
 Ms. Patricia A. Kim  
*in memory of Beatrice Kim*  
 Anonymous  
*in memory of Charles O. Kim*  
 Anonymous  
*in memory of Yoshio Kimura*  
 Philip and Debra Asuncion  
*in memory of Alejandro Lagodlagod*  
 Joel and Michel Grotstein  
*in memory of Harry and Mary Lake*  
 Toni and Stephen Lathrop-Lee  
*in memory of Gerie Lathrop*  
 Mr. Remy J. Latour  
*in memory of Wilma K. Latour*  
 Anonymous  
*in memory of William Leong*  
 Anonymous  
*in memory of John K. Lima*  
 Ms. Bessie Joy Teh Limpe  
*in memory of James and Juana Limpe*  
 Mr. Robert E. Mace  
*in memory of Adoracion Siatat Mace*  
 Anonymous  
*in memory of Hank Magana*  
 Dennis H. Matsuda  
*in memory of James and Violet Matsuda*  
 Anonymous  
*in memory of Solomon McCurdy*  
 Mrs. Jean McIntosh  
*in memory of Clinton McIntosh*  
 Ms. L. McNab  
*in memory of James McNab*  
 Anonymous  
*in memory of Morris and Ann Mendelsohn*  
 Charles and Mildred Ikehara  
*in memory of Sylvia Fumiko Miyashiro*  
 Emilian and Jean Temblor  
*in memory of Mom*  
 Mr. and Mrs. Susumu Kato  
*in memory of Deen I. Morita*  
 Ms. Ann K. Ono  
*in memory of Deen I. Morita*  
 Anonymous  
*in memory of Mother and Father*  
 Anonymous  
*in memory of James M. Muranaka*  
 Mr. Barry Murasko  
*in memory of Bernard Murasko*  
 Anonymous  
*in memory of Patrick H. Murata*  
 Mr. Ken R. Thomas  
*in memory of Amabile Musto*  
 Anonymous  
*in memory of My brother Rangson Wathana*  
 Mr. Robert Schwingen  
*in memory of My departed wife Olga P.*  
 Anonymous  
*in memory of My granddaughter Mercedes Hernandez*  
 Mrs. Nani Sykes  
*in memory of My ohana*  
 Anonymous  
*in memory of My sister Maria Natividad*  
 Robert M. Kaleiohi  
*in memory of My wife Anna E. Kaleiohi*  
 Mr. Kenneth M. Hashizume  
*in memory of My wife Helen*  
 Ms. Valerie S. Kiyokane  
*in memory of Tomie Nakahado*  
 Ms. Gertrude H. Nakamura  
*in memory of Philip K. Nakamura*  
 Anonymous  
*in memory of Lester T. Nakata*  
 Mrs. Vyra Burgess  
*in memory of Minnie L. Nunes*  
 Anonymous  
*in memory of Esther L.H. Oh and Mary Oh*  
 Charles and Mildred Ikehara  
*in memory of Richard Masato Okano*  
 Anonymous  
*in memory of Caroline Okimoto*  
 Anonymous  
*in memory of Kenneth Okinishi*  
 Ms. Shari K. Toyama  
*in memory of Marc Oley*  
 Anonymous  
*in memory of Vernia K. Olson*  
 Anonymous  
*in memory of Anne Caldwell O'Neil*  
 Anonymous  
*in memory of Alicia Paas (1994-2006)*  
 Samir and Nita Patel  
*in memory of Sumitraben Patel*  
 Mrs. Carole Picciotto  
*in memory of Roger Picciotto*  
 Anonymous  
*in memory of John R. Pingree*  
 Freda R. Hellinger  
*in memory of Puzzles*  
 Anonymous  
*in memory of Pablo T. Quiban*  
 Ms. Linda Q. Green  
*in memory of Walter B. Quisenberry, M.D.*  
 Anonymous

*in memory of Robert Ramos*  
 C. and C. Yamaguchi  
*in memory of Our son Calvin*  
 Mr. George C. Robello, Jr.  
*in memory of Likelike B. Robello*  
 Mr. and Mrs. Phillip B. Samulski  
*in memory of Kevin Samulski*  
 Anonymous  
*in memory of Hugh and Clara Say*  
 Anonymous  
*in memory of Hugh Sun Chung Say*  
 ROSES Systems Solutions  
*in memory of John F. Schick*  
 Robert and Shirley Kamins  
*in memory of Mary M. Shaw*  
 Mr. Stanley A. Shimote  
*in memory of Fran Shimote*  
 Anonymous  
*in memory of Enrique Shiroma*  
 Mr. Wilfred T. Shiroma  
*in memory of Gladys Shiroma*  
 Mr. Miles Silberstein  
*in memory of John Silberstein*  
 Anonymous  
*in memory of Vernie Slayter, my spouse*  
 Anonymous  
*in memory of Mindy Starr*  
 Inter Island Ophthalmics, LLC  
*in memory of Stella and Irene*  
 Ms. Celine Carreira  
*in memory of Diana Stevens*  
 Anonymous  
*in memory of Ruby H. Sugimura*  
 Troy and Pam Goodman  
*in memory of Sunshine and Koa*  
 Mrs. May S. Takamine  
*in memory of Satoru Takamine*  
 Mr. and Mrs. Gil J. Leong  
*in memory of Suyeki Okamura, Esq.*  
 Anonymous  
*in memory of U.S. Troops in Iraq*  
 Anonymous  
*in memory of John Tibbs*  
 Anonymous  
*in memory of Toshiko Tome*  
 Anonymous  
*in memory of U.S. Military*  
 Edna U. Kajiwara  
*in memory of Hanae Umeda*  
 Mrs. Raye Vculek  
*in memory of Francis Vculek*  
 Anonymous  
*in memory of Henry Viernes*  
 Peggy Vierra  
*in memory of Raymond Vierra*  
 Anonymous  
*in memory of Chuck Wallace*  
 Anonymous  
*in memory of Reynold Watanabe*  
 Ms. Margaretta Nelson  
*in memory of Lou Williams*  
 The Edwin S.N. Wong Foundation  
*in memory of Edwin S. Wong*  
 Mrs. Caroline W. Oda  
*in memory of Ann and Art Wood*  
 Anonymous  
*in memory of Richard and Helene Yanaguchi*  
 Mrs. Lanette K. Yoshioka  
*in memory of Gary Yoshioka*  
 Mr. Walter D. Dudinow, Jr.  
*in memory of My aunt Vera*  
 John and Kalu Baldwin  
*in memory of Ah Kai Yuen*  
 Mr. William Yuen  
*in memory of Mrs. Wun Fong Yuen*  
 Kenneth J. Zienkiewicz, M.D.  
*in memory of Eleanor Zienkiewicz*

**IN-KIND DONORS  
 Products or Services \$1,000 or More**

Accel Party Rentals & Design  
 Adecco Personnel Services  
 Aiea Copy Center  
 Ala Moana Hotel  
 All Nippon Airways Co., Ltd.  
 Aloha Shoyu Co., Ltd.  
 Anheuser-Busch Sales of Hawaii, Inc.  
 Benihana of Tokyo  
 Big City Diner  
 Cafe Lauffer  
 California Hotel & Casino  
 Central Pacific Bank  
 Certified Management, Inc.  
 Charley's Taxi  
 Coca-Cola Bottling Company of Hawaii  
 DoubleTree Alana Hotel - Waikiki  
 Edward Enterprises, Inc.  
 Expressions of Aloha, LLC  
 Fremont Hotel & Casino  
 Frito-Lay of Hawaii  
 Grand Wailea Resort  
 Halekulani Corporation  
 Hawaii Nissan Inc.  
 Hawaii Prince Hotel Waikiki  
 Hawaiian Sun Products  
 Hawaiian Telcom  
 Hilton Hawaiian Village Beach Resort & Spa  
 Hilton Waikoloa Village  
 HMSA  
 Itoen USA Inc.

Jamba Juice  
 JMD Beverages  
 Luana Hills  
 Main Street Station Hotel, Casino & Brewery  
 Mandara Spa  
 McCully Shopping Center  
 Mobile Drapery Cleaners of Yahu, Inc.  
 Morton's the Steakhouse  
 Mr. and Mrs. Stan Brown  
 NetEnterprise  
 Oceanic Time Warner Cable  
 P.F. Chang's China Bistro  
 Park Shore Waikiki  
 Princeville Resort  
 Progressive Marketing  
 Punahou Fitness & Spa  
 Round Table Pizza  
 Sheraton Hotels & Resorts Waikiki  
 Tesoro Hawaii Corporation  
 This Week Publications  
 Turtle Bay Resort  
 Victoria Ward Centers  
 Waikolea Premium Outlets  
 Waikiki Parc Hotel  
 Xerox Hawaii  
 Young Brothers, Limited  
 Young Laundry & Dry Cleaning

**FOOD DONORS**

**1,000 Pounds or More**

A.C. Lyau Company, Ltd.  
 Abbott Nutrition  
 ABC Stores  
 Access Logistics, Ltd.  
 Advantage Webco Hawaii  
 Akamai Pacific  
 Milani Uka Elementary School  
 Moanalua High School  
 Nabisco Brands, Inc.  
 Nalo Farms  
 National Association of Letter Carriers  
 Nature's Best  
 Naval Medical Clinic  
 Nestle USA  
 Nuuanu Congregational Church  
 Oahu Vending & Amusement  
 Ocean Spray, Inc.  
 Paradise Beverages  
 Pearl City Shopping Center  
 Pearl Harbor Commissary  
 Peppergate Farm, Inc.  
 Pepsi Bottling Group - Hawaii  
 Pet Expo (Ohana Veterinary Hospital)  
 Pinnacle Foods  
 Price Busters  
 Procter & Gamble Distribution Company  
 Punahou School  
 Rego's Purity Foods Co., Inc.  
 Restaurant Row  
 Rocky Road Products, Inc.  
 Ruby Tuesday Restaurants  
 S&K Sales Company, Inc.  
 Sack 'N Save  
 Sacred Hearts Academy  
 Safeway Food & Drugs Stores - Hawaii  
 Safeway Produce Distribution Center  
 Saint-Germain America  
 Salt Lake Elementary School  
 Salt Lake Elementary School  
 Schofield Barracks  
 Southern Wine & Spirits of Hawaii  
 Star Markets  
 Strictly S Truck Club  
 Taco Bell  
 Taiyo, Inc.  
 Tamura Supermarket  
 TD Food Group, Inc  
 The Freight Merchant  
 The Patisserie Bakery Company  
 The Pint Size Corporation  
 Times Supermarkets  
 Town Center of Mililani  
 TRS Unlimited  
 Tyson Foods, Inc.  
 Uncle Ben's, Inc.  
 Uncled Corporation  
 Valenti Print Group  
 W.I.C.  
 Wahiawa Elementary School  
 Waianae Mall Shopping Center  
 Waiala Elementary School  
 Waikiki Beach Marriott Resort  
 Waikolea Congregational Church  
 Wheeler Elementary School  
 Wilson Food Service  
 Windward City Shopping Center  
 Wing Sing Seafood, Inc.  
 XPEDX  
 Y. Hata and Company, Ltd.  
 You Produce Company

# HAWAII FOODBANK IN THE COMMUNITY



## THE HMSA HOLIDAY FOOD DRIVE 2006

The Hawaii Foodbank received a special Thanksgiving donation from HMSA employees on November 20, 2006. Employees from Oahu, Maui and Kauai donated \$11,870 and 4,678 pounds of food to feed the hungry. The drive happened over a four-week period with teams competing through weekly weigh-ins. "The donations are one way HMSA employees make a difference in the community during the holidays," said Laura Lott, Community Relations Manager. "They enjoyed being on teams and engaging in our Thanksgiving competition, but it was the spirit of aloha and holiday giving that really motivated them to join in."

## MAYOR'S PROCLAMATION

On April 5, Mayor Mufi Hannemann proclaimed April 2007 as "Helping to Feed Hawaii's Hungry" month. From left to right: Mayor Mufi Hannemann,



Hawaii Foodbank Board Chair Linda Chu Takayama, Annual Food Drive Chair Sheri Rolf and City and County Food Drive Coordinator Jay Ishibashi. After the proclamation, the City Cabinet presented 1,114 pounds of rice to the Hawaii Foodbank and loaded them onto a Honolulu Fire Department truck.

## THE MATSON NAVIGATION ANNUAL FOOD DRIVE

Gary North of Matson Navigation and members of the 2007 food drive committee visited the Foodbank on April 20 and presented Dick Grimm,



Hawaii Foodbank president with a \$5,127 check and 665 pounds of food. It has become the foundation's tradition to present their donations the day before to jump start Annual Food Drive Day.



The Can-ery Island

## THE HAWAII PRINCE HOTEL WAIKIKI FOOD COMPETITION

The employees of the Hawaii Prince Hotel Waikiki participated in a two-week food drive from March 6 to 15 to benefit the Foodbank. First, a goal was set to collect 3,000 pounds of food. Then departments were formed into three teams to create elaborate food compositions. By the end of the drive, the hotel exceeded its goal by collecting 3,217 pounds of food. Congratulations to all the employees of the Hawaii Prince Hotel Waikiki for their creativity and dedication to feeding the hungry!

## SAM'S CLUB CHECK PRESENTATION

On April 11, manager Shana Santiago (back, center) and employees from Sam's Club Keeaumoku presented the Hawaii Foodbank with a \$2,125 check and 44 pounds of canned foods during their storewide morning meeting. The check was a grant awarded through the

Wal-Mart Foundation. The food donations were collected and purchased by employees. Mahalo to the Sam's Club ohana for their generous donations!



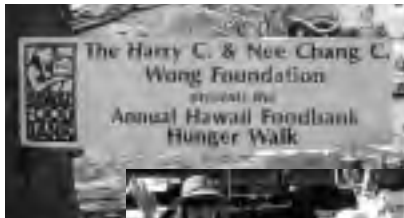
## THE DCCA FOOD PYRAMID

The state Department of Commerce and Consumer Affairs Food Drive Committee led by coordinator Shirl Fujihara (fourth right) constructed the DCCA Food Pyramid on May 4. The pyramid was built with the 2,622 pounds of food collected by employees from all DCCA divisions. Mahalo to the committee and all the employees of DCCA for their great team effort!



# HAWAII FOODBANK HUNGER WALK 2007

Saturday, June 9 marked the third annual **Hawaii Foodbank Hunger Walk** sponsored by the Harry C. and Nee Chang C. Wong



The Foodbank partners with over 250 member agencies to feed 131,862 people statewide each year including 32,965 children and 14,504 seniors. Participating agencies enjoyed a mile walk around Honolulu Hale to raise hunger awareness and monetary donations to support of their food pantries, feeding programs, homeless shelters, rehabilitation centers, soup kitchens and even a medicine bank.

The morning started with a warm welcome by Hawaii Foodbank president, **Dick Grimm** and a moving invocation by Pastor **Tom Bauer**. A team from Surfing the Nations led the walkers through a warm up and stretch.

They were joined by special guest, Kraft Cheesaurus Rex®!

Upon their return, walkers enjoyed fresh fruits from

**Safeway Hawaii Kai**, sandwiches made by **Holy Hill of Zion** and tasty chili dogs by **Kau Kau Wagon**, hot dog cart and all! Entertainment was provided by the kids of **Lighthouse Youth Outreach**

who energized the crowd with their dance moves, followed by the **Hawaii Youth Chorus** and the **Karaoke Kids** who sang their hearts out with a special appearance by Hawaii's Junior Miss 2007, **Kaitlin Koga**. The "Three G's" from Surfing the Nations performed a hula and also a rap to end hunger. Children's activities were provided by Hug Me Bears.

All contributions were designated to an agency or put into a Community Pot which will be divided among all participants. The Hawaii Foodbank matched up to \$25,000 and the Wong Foundation an additional \$25,000!

Last year's Hunger Walk raised \$37,414. This year agencies collected over \$40,841, surpassing all expectations! Congratulations to this year's agencies on a job well done and for their hard work in helping to feed Hawaii's hungry! 🍌



## Food Banks Go Hungry

*Continued from page 1*

community support to continue feeding the hungry in Hawaii.

The Foodbank Board, staff and volunteers are faced with the challenge of raising more funds through annual events, appeals, and our monthly giving program (see page 3). Monies raised will enable the Foodbank to purchase foods through America's Second Harvest Choice System. The system enables the Foodbank to bid for protein and other high demand foods to supplement donated foods received. However, shipping and transportation costs will always be a significant factor with food purchases.

The Foodbank has also secured grant monies to purchase refrigerated trucks to pick up food donations faster and more efficiently. The

ConAgra Feeding Children Better Foundation has donated one truck just arrived. The Friends of Hawaii Charities and the Frear Eleemosynary Trust have shared sponsorship of another truck just placed on order.

On June 4, 2007, **Mike Kajiwara** joined the Foodbank ohana as Director of Product Donations, responsible for identifying new food donors and maintaining relationships with current ones. Keeping the needs of the Foodbank foremost in the food industry community will be a key factor in increasing the pounds of food donated to the Foodbank in the coming years.

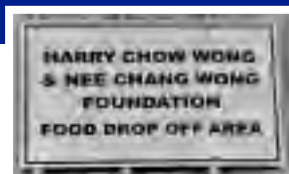
Let's work together to increase food donations by organizing community food drives, fund-raisers and giving generously during Foodbank campaigns like Annual Food Drive, Kraft's Check-Out Hunger and the Letter Carriers Food Drive. Mahalo for your continued support in helping to feed Hawaii's hungry! 🍌



**Iwalani Kaloi Peppers**  
Human Resources Manager,  
Accountant and Friend  
In Loving Memory  
January 18, 1945 – February 16, 2007

## HARRY CHOW WONG & NEE CHANG WONG FOUNDATION FOOD DROP OFF AREA

The Bishop Museum and Kraft Foods Hawaii partnered to bring the traveling exhibit "**Dinosaurs Alive!**" from December 9, 2006 through January 28, 2007. A special three dollar discount off keiki admission was offered with a donation of select Kraft products. All donations benefited the Hawaii Foodbank. The promotion collected 80 pounds of quality Kraft foods to feed the hungry in Hawaii. 🍌



Presenting the donations are Bishop Museum staff **Michelle Greeno**, (second from left) and **Charlie Aldinger** (right) to Hawaii Foodbank staff **Polly Kauahi** (left) and **Jodi Yoshida** (second from right).



# Nourishing Body and Soul

Jade Moon



Another food drive come and gone, and although we can claim success, it's with the

knowledge that hunger is a persistent and prowling menace. It can be eased, it can be attacked, but it never will be truly eradicated.

But what thousands of Hawaii good Samaritans did on that hot Saturday in April was incredible. Together, they proved that the menace that threatens so many of our ohana can be kept at bay—through the collected effort and generosity of people who care.

As I write this, I have the TV turned to a newscast. The images on the screen run

the gamut from the tragic to the trivial. There are 12 more American deaths in Iraq, a hostage standoff in Illinois, the space shuttle landing is delayed and, oh yes, Paris Hilton is still in jail. Like I said—tragic to trivial.

What's not trivial is the way we deal with the chaos in our personal lives. We keep the monster at bay by providing safe havens for our loved ones and our friends. Every day in Hawaii people are committing acts of kindness that far outnumber the crimes we see prominently featured on the nightly newscast. The good deeds rarely generate headlines, and when you think about it, that's okay. If good deeds become so rare that they warrant news coverage, then we're really in trouble.

But sometimes the good is on such a large scale that it does make the news. The Hawaii Foodbank's annual food

drive is an example. The sheer scale of the undertaking and the huge response by our citizens is a truly awesome thing. For that one day, people from all walks of life come together and generate enough good will to radiate into the cosmos. Okay, that sounds a bit new "age-y," but that's what it looks like from where I stand.

This year I traveled with Foodbank President Dick Grimm to the collection sites around Oahu. At every location I was impressed with the enthusiasm of the volunteers. They turn a project into a party, and people who dropped by to give a few dollars or bags of food were clearly delighted to be able to help. And help they did—this year we met and exceeded our goals for food and cash.

I wish we could bottle that spirit and aloha—we'd change the world. 🌍



Non-Profit Org.  
U.S. Postage  
PAID  
Honolulu, HI  
Permit No. 550

[www.hawaiiifoodbank.org](http://www.hawaiiifoodbank.org)

*Helping to Feed Hawaii's Hungry*

**HAWAII FOODBANK, INC.**  
2611 Kilihau Street  
Honolulu, HI 96819

